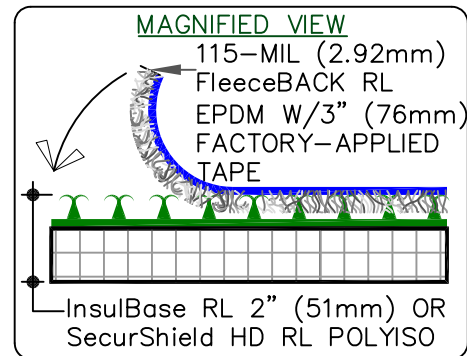
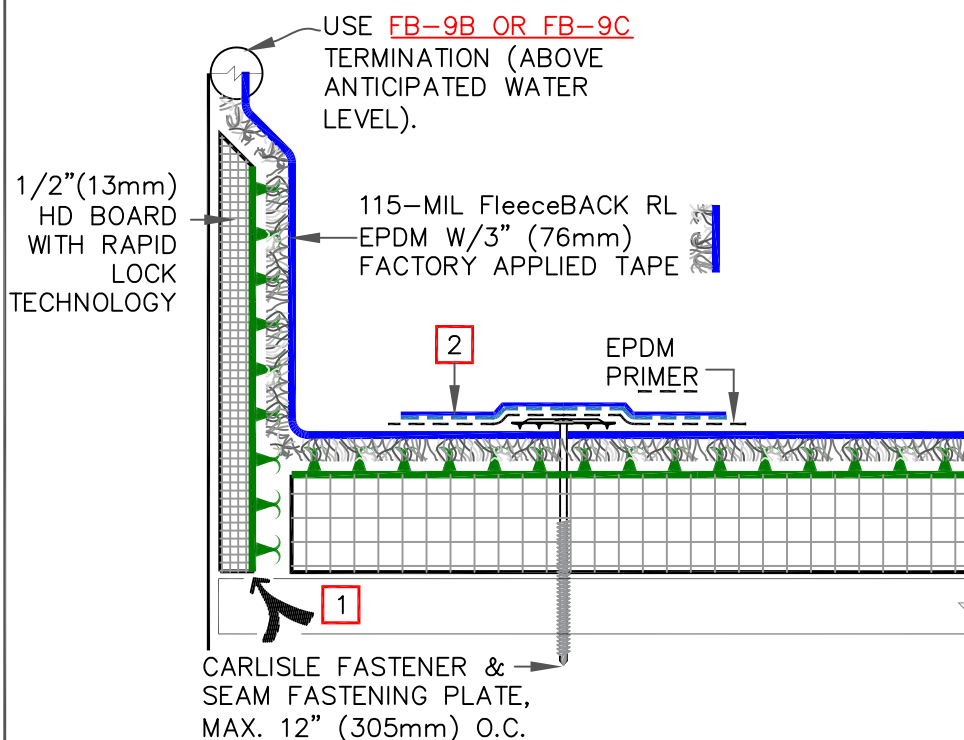


Table of Contents

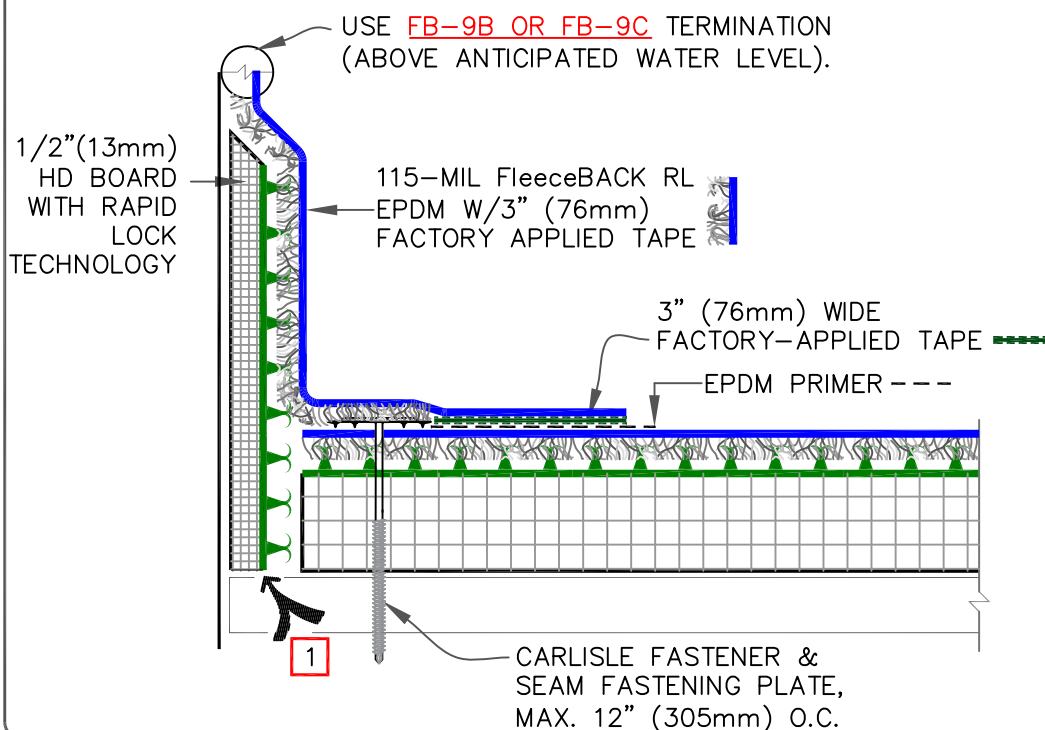
1.	RL-12A.1 EPDM RL (RAPID LOCK) - PARAPET/CURB FLASHING WITH NO ADHESIVE	2
2.	RL-2A.1 EPDM RL (RAPID LOCK) - MEMBRANE SPLICES	3
3.	RL-12B.1 TPO RL (RAPID LOCK) - PARAPET/CURB FLASHING WITH NO ADHESIVE	4
4.	RL-12A.2 EPDM RL (RAPID LOCK) - PARAPET/CURB FLASHING WITH CAV-GRIP III (PAGE 1 AND 2)	5
5.	RL-12B.2 TPO RL (RAPID LOCK) - PARAPET/CURB FLASHING WITH ADHESIVE ON WALL BOARD	7
6.	RL-2B.1 TPO RL (RAPID LOCK) - MEMBRANE SPLICES	8
7.	RL-6.2A TPO RL (RAPID LOCK) - ROOF DRAIN	9
8.	RL-6A.1 EPDM RL (RAPID LOCK) - ROOF DRAIN	10
9.	RL-6B.1 EPDM RL (RAPID LOCK) - ROOF DRAIN	11
10.	RL-6.2B TPO RL (RAPID LOCK) - ROOF DRAIN	12



NOTES:

1. REFER TO SPEC SUPPLEMENT [G-01-18](#) & [G-08-18](#) TO BLOCK INDOOR AIR.
2. 6" (152mm) MIN. WIDE PRESSURE-SENSITIVE CURED COVER STRIP CENTERED OVER FASTENERS.

OPTION A (NO ADHESIVE)

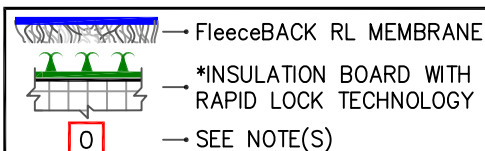


NOTE:

1. REFER TO SPEC SUPPLEMENT [G-01-18](#) & [G-08-18](#) TO BLOCK INDOOR AIR.

OPTION B (NO ADHESIVE)

*RAPID LOCK TECHNOLOGY IS MAGNIFIED ON SCALE



EPDM RL™ (RAPID LOCK) –
PARAPET/CURB FLASHING WITH NO
ADHESIVE
For additional information, refer to Specifications

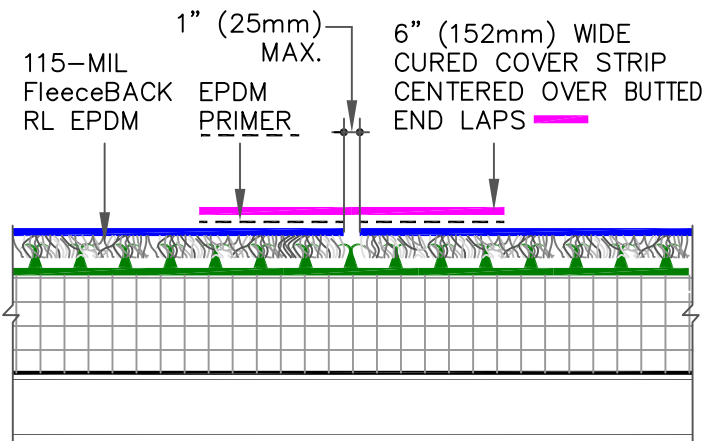
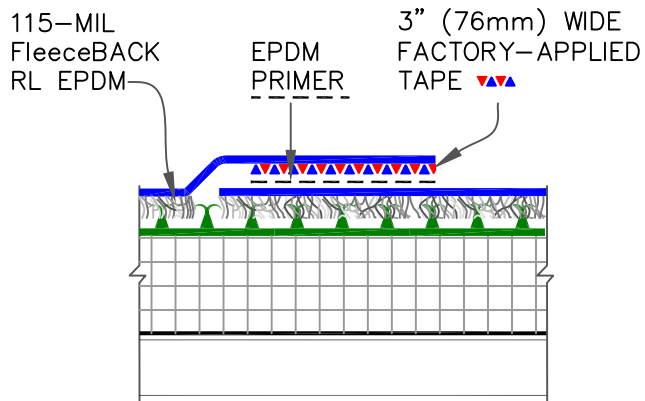
DETAIL NO.

RL-12A.1

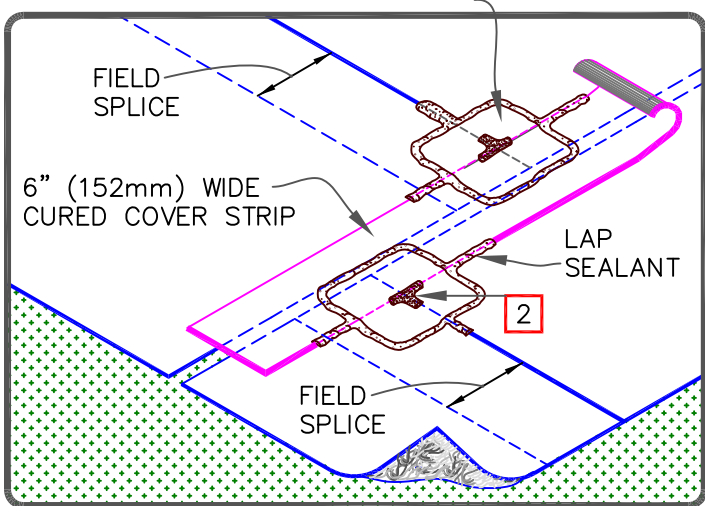
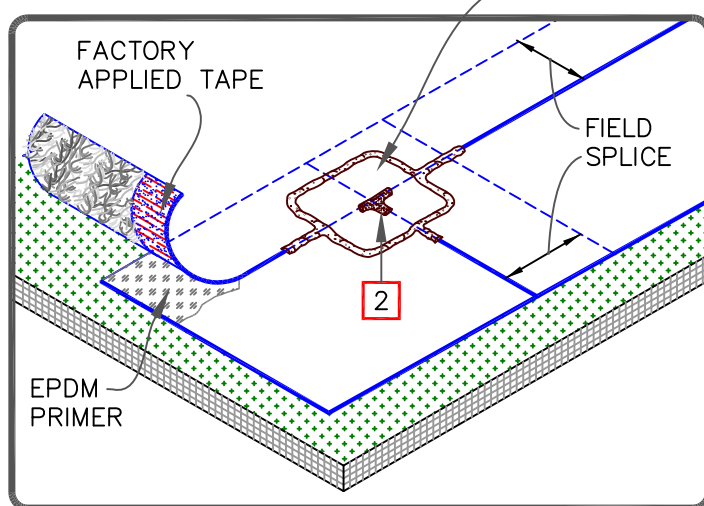
RAPID LOCK

MEMBRANE SPLICE

END LAP SPLICE



PRESSURE-SENSITIVE T-JOINT COVER (SEE NOTES)

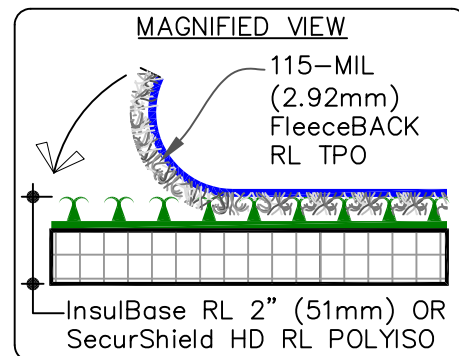
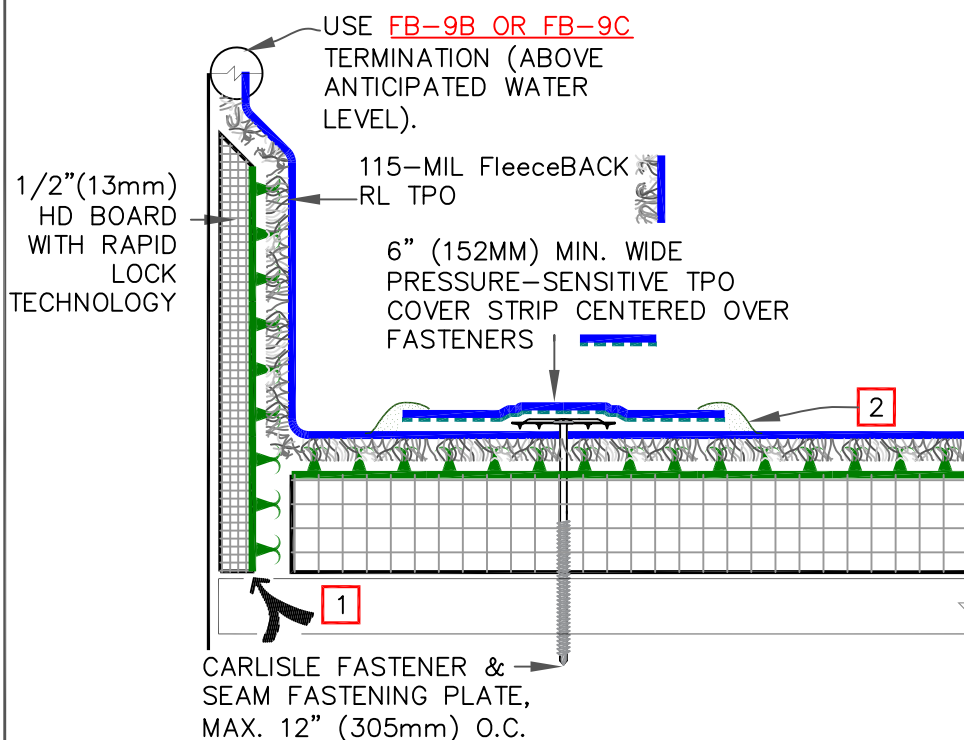


NOTES:

1. APPLY EPDM PRIMER TO MEMBRANE SURFACES PRIOR TO INSTALLING PRESSURE-SENSITIVE FLASHING AND/OR FACTORY APPLIED SecurTAPE.
2. APPLY LAP SEALANT ALONG THE EDGE OF THE MEMBRANE SPLICE (UNDER THE 6"x6" T-JOINT COVER) COVERING THE EXPOSED SPLICE TAPE 1/2" (13mm) IN EACH DIRECTION FROM THE SPLICE INTERSECTION.
3. INSTEAD OF T-JOINT COVERS, EPDM SPLICE INTERSECTIONS MAY BE OVERLAID WITH ONE LAYER OF 6"X6" (152mm X 152mm) PRESSURE-SENSITIVE ELASTOFORM FLASHING. IT SHOULD BE CENTERED OVER THE SPLICE INTERSECTION AND SEALED WITH CONTINUOUS LAP SEALANT.

*RAPID LOCK TECHNOLOGY IS MAGNIFIED ON SCALE

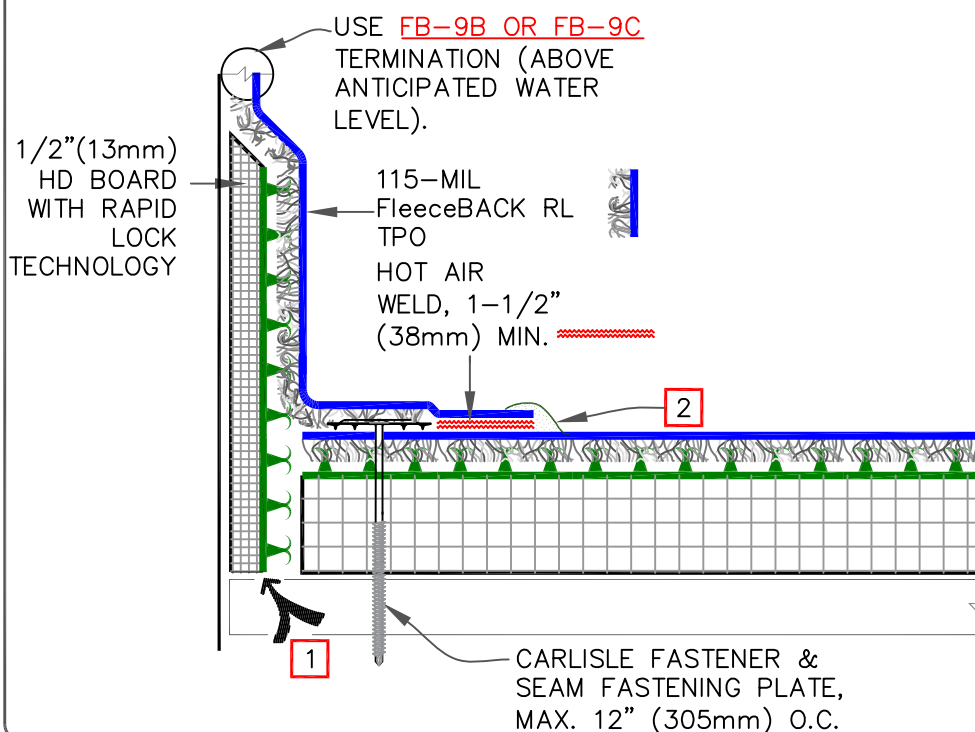
<p>FleeceBACK RL MEMBRANE</p> <p>*INSULATION BOARD WITH RAPID LOCK TECHNOLOGY</p> <p>0</p> <p>SEE NOTE(S)</p>	<p>EPDM RL™ (RAPID LOCK) – MEMBRANE SPLICES</p> <p>For additional information, refer to Specifications</p>	<p>DETAIL NO.</p> <p>RL-2A.1</p> <p>RAPID LOCK</p>
---	--	--



NOTES:

1. REFER TO SPEC SUPPLEMENT **G-01-18** & **G-08-18** TO BLOCK INDOOR AIR.
2. APPROXIMATELY 1/8" (3mm) DIAMETER BEAD OF CUT-EDGE SEALANT IS REQUIRED ON CUT EDGES OF REINFORCED TPO MEMBRANE.

OPTION A (NO ADHESIVE)

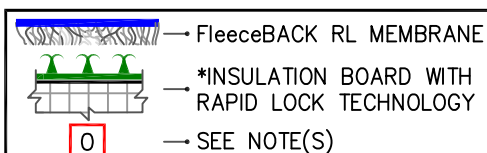


NOTES:

1. REFER TO SPEC SUPPLEMENT **G-01-18** & **G-08-18** TO BLOCK INDOOR AIR.
2. APPROXIMATELY 1/8" (3mm) DIAMETER BEAD OF CUT-EDGE SEALANT IS REQUIRED ON CUT EDGES OF REINFORCED TPO MEMBRANE.

OPTION B (NO ADHESIVE)

*RAPID LOCK TECHNOLOGY IS MAGNIFIED ON SCALE



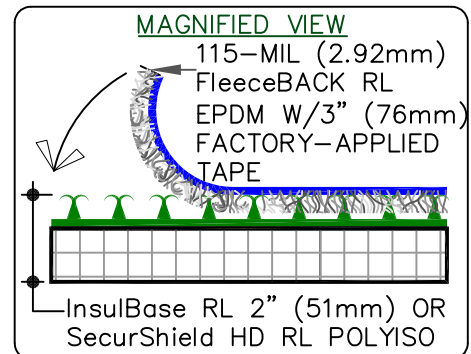
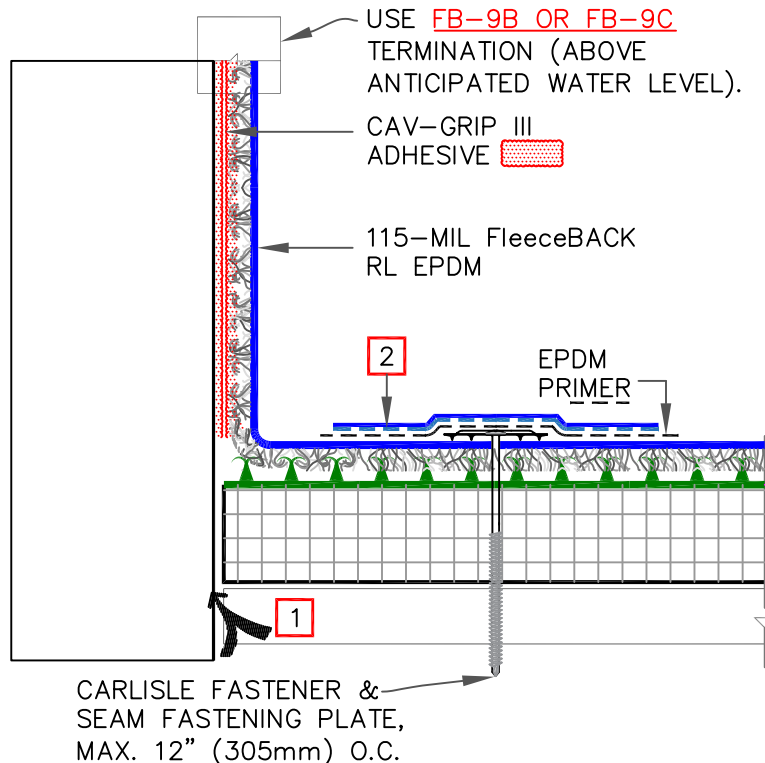
TPO RL™ (RAPID LOCK) –
PARAPET/CURB FLASHING WITH NO
ADHESIVE

For additional information, refer to Specifications

DETAIL NO.

RL-12B.1

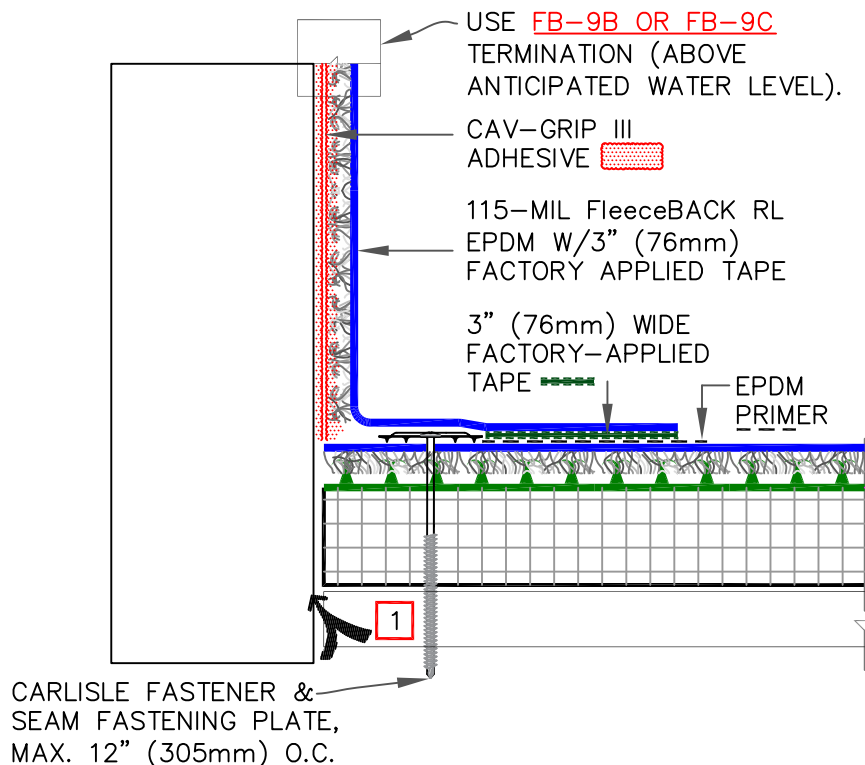
RAPID LOCK



NOTES:

1. REFER TO SPEC SUPPLEMENT [G-01-18](#) & [G-08-18](#) TO BLOCK INDOOR AIR.
2. 6" (152mm) MIN. WIDE PRESSURE-SENSITIVE CURED COVER STRIP CENTERED OVER FASTENERS.

OPTION A (CAV-GRIP III & RL MEMBRANE)

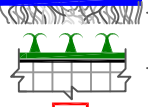


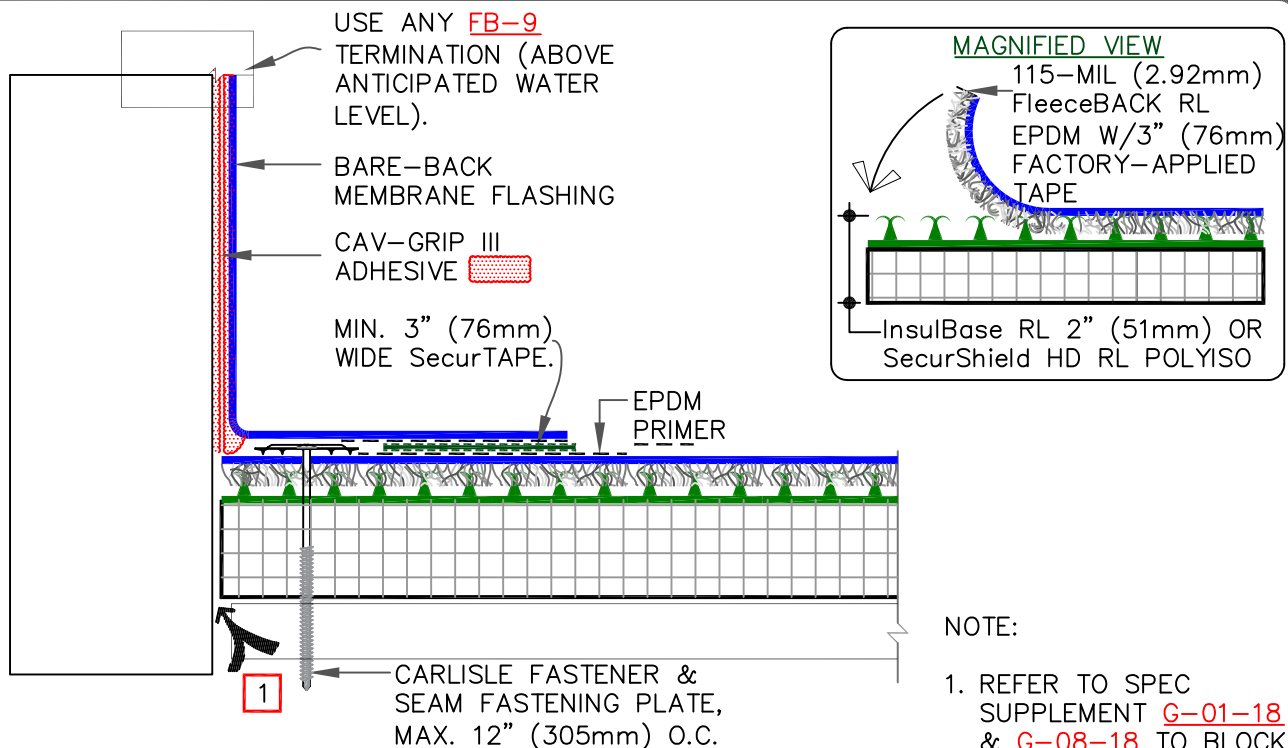
NOTE:

1. REFER TO SPEC SUPPLEMENT [G-01-18](#) & [G-08-18](#) TO BLOCK INDOOR AIR.

OPTION B (CAV-GRIP III & RL MEMBRANE)

*RAPID LOCK TECHNOLOGY IS MAGNIFIED ON SCALE

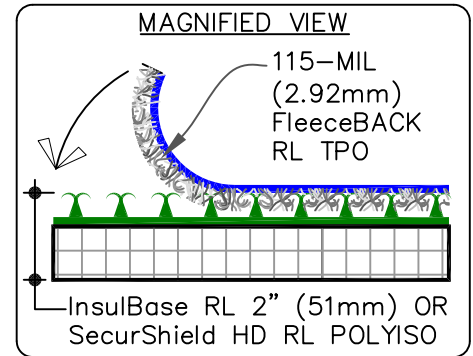
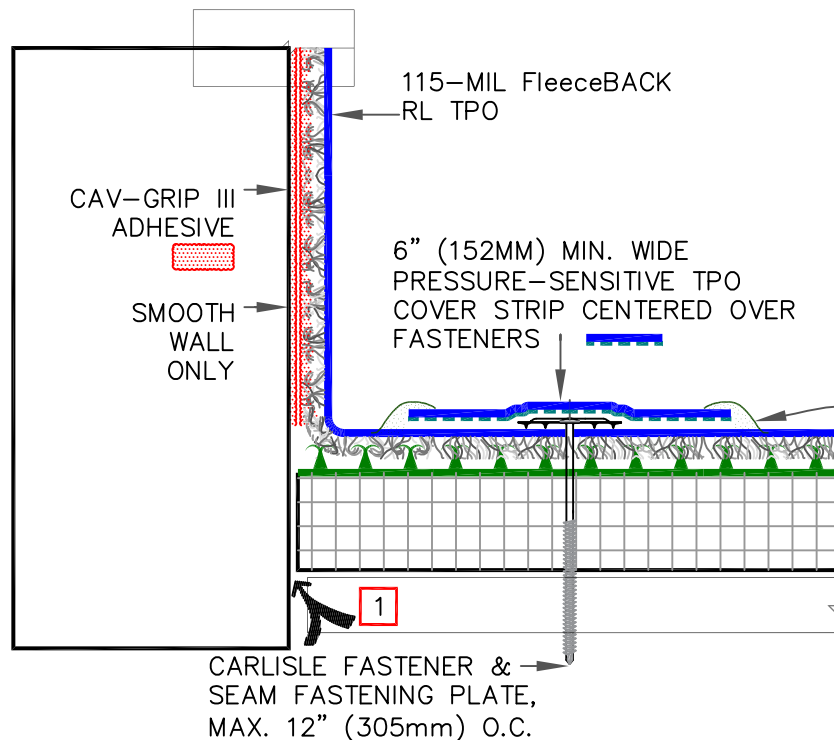
 <p>→ FleeceBACK RL MEMBRANE</p> <p>*INSULATION BOARD WITH RAPID LOCK TECHNOLOGY</p> <p>0 → SEE NOTE(S)</p>	<p>EPDM RL™ (RAPID LOCK) – PARAPET/CURB FLASHING WITH CAV-GRIP III (PAGE 1 OF 2)</p> <p>For additional information, refer to Specifications</p>	<p>DETAIL NO.</p> <p>RL-12A.2</p> <p>RAPID LOCK</p>
--	---	---



OPTION C (CAV-GRIP III & BARE-BACK MEMBRANE)

*RAPID LOCK TECHNOLOGY IS MAGNIFIED ON SCALE

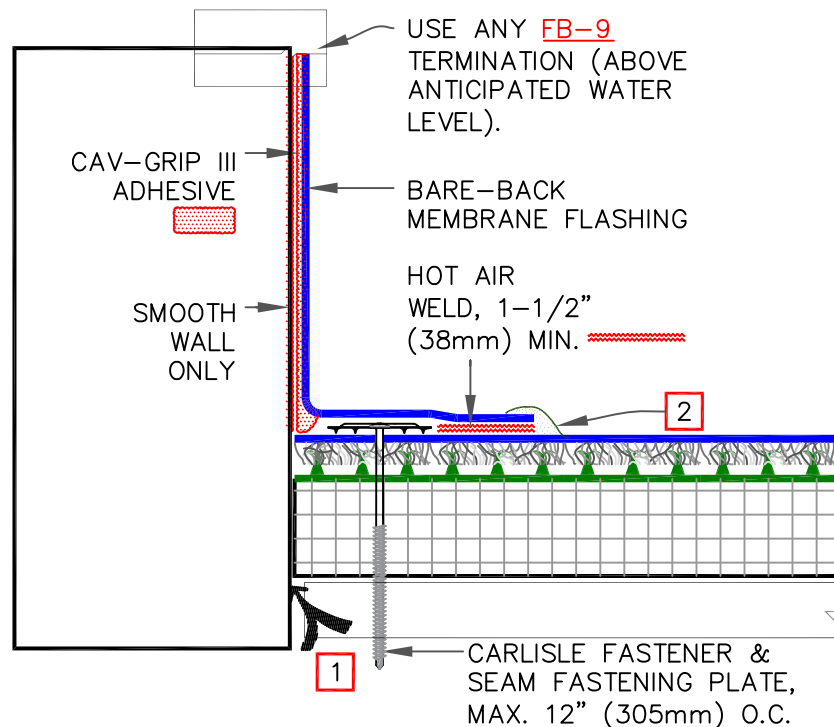
<p>→ FleeceBACK RL MEMBRANE</p> <p>→ *INSULATION BOARD WITH RAPID LOCK TECHNOLOGY</p> <p>→ SEE NOTE(S)</p>	<p>EPDM RL™ (RAPID LOCK) – PARAPET/CURB FLASHING WITH CAV-GRIP III (PAGE 2 OF 2)</p> <p>For additional information, refer to Specifications</p>	<p>DETAIL NO.</p> <p>RL-12A.2</p> <p>RAPID LOCK</p>
--	---	---



NOTES:

1. REFER TO SPEC SUPPLEMENT [G-01-18](#) & [G-08-18](#) TO BLOCK INDOOR AIR.
2. APPROXIMATELY 1/8" (3mm) DIAMETER BEAD OF CUT-EDGE SEALANT IS REQUIRED ON CUT EDGES OF REINFORCED TPO MEMBRANE.

OPTION A (CAV-GRIP III ON WALL & RL MEMBRANE)



NOTES:

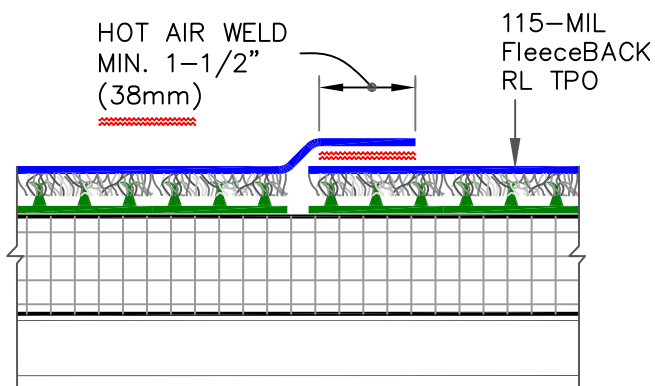
1. REFER TO SPEC SUPPLEMENT [G-01-18](#) & [G-08-18](#) TO BLOCK INDOOR AIR.
2. APPROXIMATELY 1/8" (3mm) DIAMETER BEAD OF CUT-EDGE SEALANT IS REQUIRED ON CUT EDGES OF REINFORCED TPO MEMBRANE.

OPTION B (CAV-GRIP III & BARE-BACK MEMBRANE)

*RAPID LOCK TECHNOLOGY IS MAGNIFIED ON SCALE

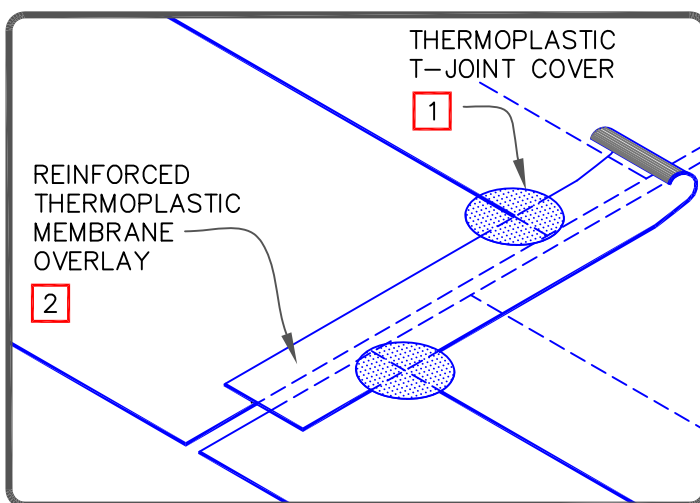
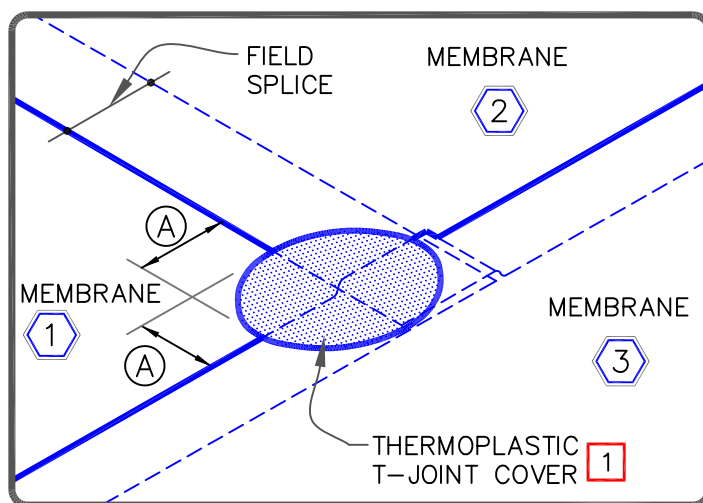
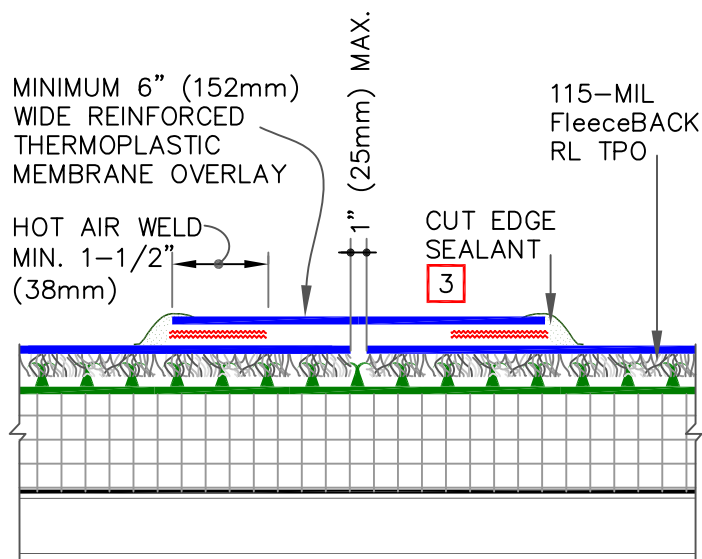
<p>→ FleeceBACK RL MEMBRANE</p> <p>*INSULATION BOARD WITH RAPID LOCK TECHNOLOGY</p> <p>→ SEE NOTE(S)</p> <p>0</p>	<p>TPO RL™ (RAPID LOCK) – PARAPET/CURB FLASHING WITH CAV-GRIP III ADHESIVE ON WALL</p> <p>For additional information, refer to Specifications</p>	<p>DETAIL NO.</p> <p>RL-12B.2</p> <p>RAPID LOCK</p>
---	---	---

MEMBRANE SPLICE



DIMENSION	mm
(A) 2-1/4"	57

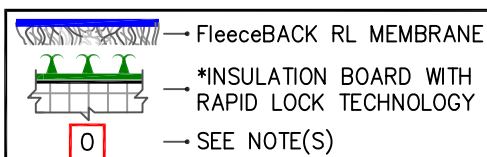
END LAP SPLICE



NOTES:

1. WHEN USING 115-MIL TPO MEMBRANE, APPLY A 4-1/2" (114mm) DIAMETER THERMOPLASTIC "T-JOINT" COVER AT ALL FIELD SPLICE INTERSECTIONS.
2. WHEN USING 60 MIL THERMOPLASTIC REINFORCED MEMBRANE OVERLAY, INTERSECTIONS BETWEEN SPLICES MUST BE OVERLAID WITH A 4-1/2" (114mm) DIAMETER THERMOPLASTIC "T-JOINT" COVER.
3. APPROXIMATELY 1/8" (3mm) DIAMETER BEAD OF CUT-EDGE SEALANT IS REQUIRED ON CUT EDGES OF REINFORCED TPO MEMBRANE.

*RAPID LOCK TECHNOLOGY IS MAGNIFIED ON SCALE



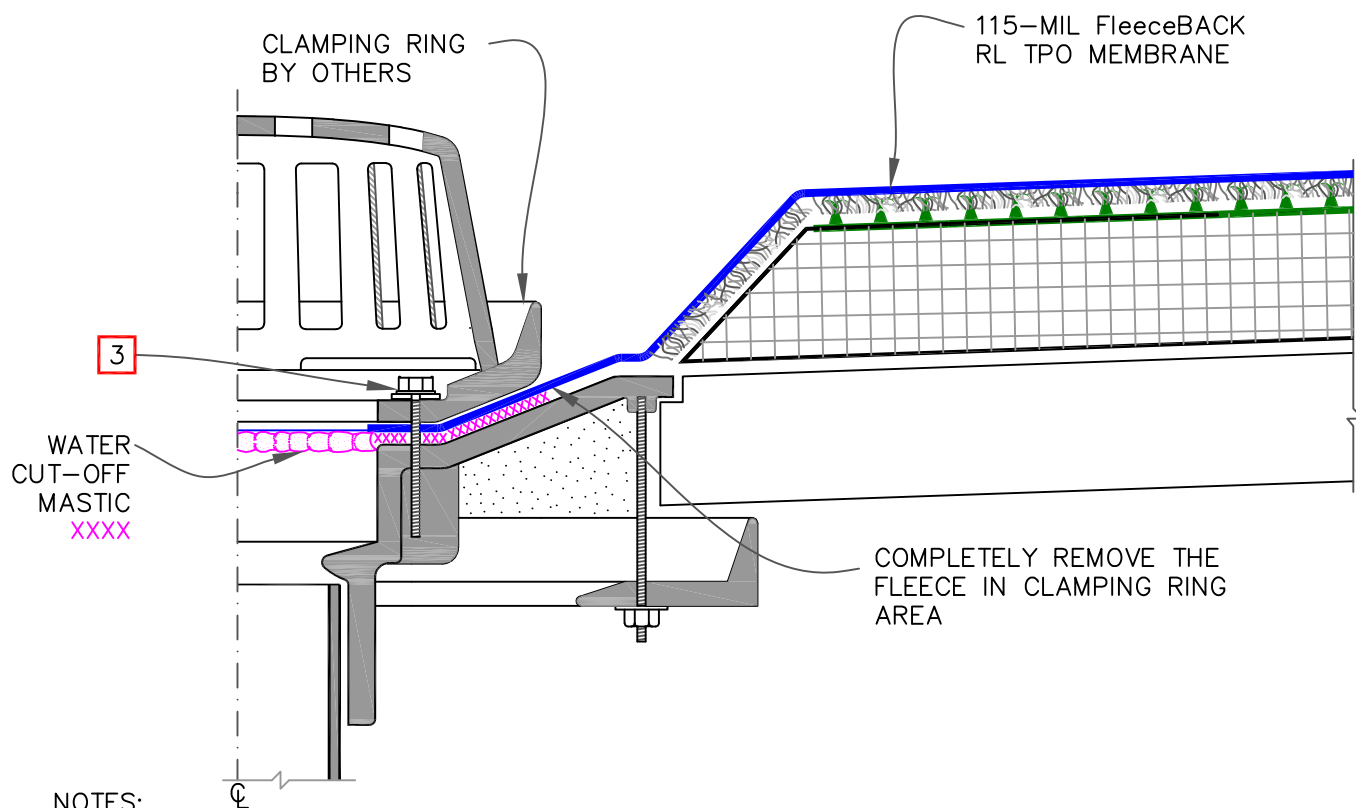
TPO RL™ (RAPID LOCK) –
MEMBRANE SPLICES

For additional information, refer to Specifications

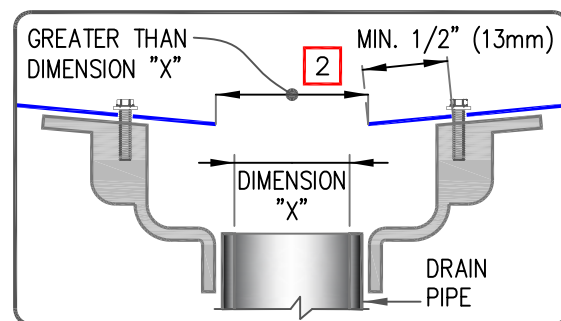
DETAIL NO.

RL-2B.1

RAPID LOCK

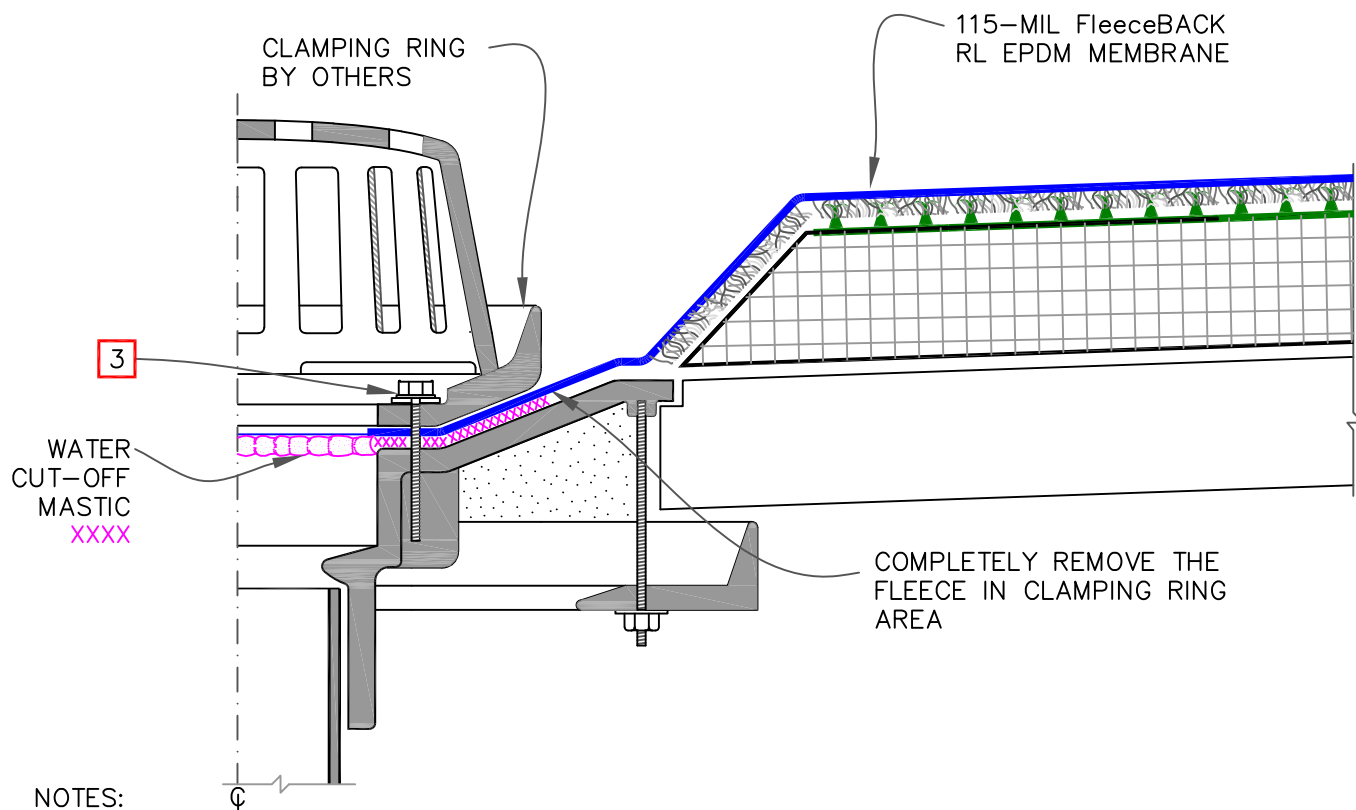


1. REMOVE EXISTING LEAD, FLASHING MATERIAL & ENSURE THE DRAIN RING IS COMPLETELY CLEAN DOWN TO BARE METAL.
2. THE HOLE IN THE MEMBRANE SHALL EXCEED THE DIAMETER OF THE DRAIN PIPE, BUT SHALL BE NO LESS THAN 1/2" (13mm) FROM THE ATTACHMENT POINTS OF THE DRAIN CLAMPING RING.
3. ALL BOLTS OR CLAMPS MUST BE IN PLACE TO PROVIDE CONSTANT COMPRESSION ON WATER CUT-OFF MASTIC.
4. FIELD SPLICES MUST BE LOCATED AT LEAST 6 INCHES (152mm) OUTSIDE THE DRAIN SUMP.
5. ROOF DRAIN SIZE AND NUMBER OF DRAINS SHALL BE IN ACCORDANCE WITH THE LOCAL CODES.

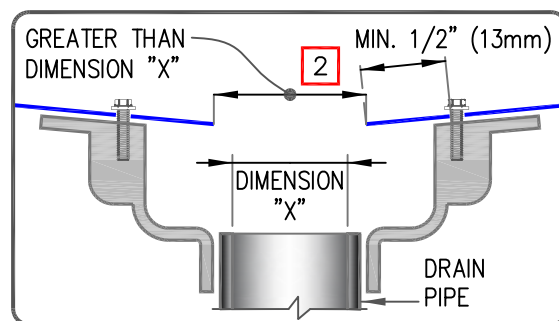


*RAPID LOCK TECHNOLOGY IS MAGNIFIED ON SCALE

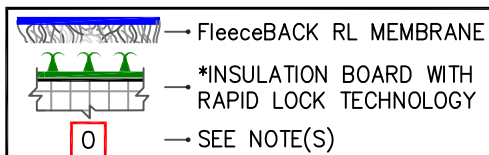
<p>0</p> <p>SEE NOTE(S)</p>	<p>TPO RL™ (RAPID LOCK) – ROOF DRAIN</p> <p>For additional information, refer to Specifications</p>	<p>DETAIL NO.</p> <p>RL-6.2A</p> <p>RAPID LOCK</p>
-----------------------------	---	--



1. REMOVE EXISTING LEAD, FLASHING MATERIAL & ENSURE THE DRAIN RING IS COMPLETELY CLEAN DOWN TO BARE METAL.
2. THE HOLE IN THE MEMBRANE SHALL EXCEED THE DIAMETER OF THE DRAIN PIPE, BUT SHALL BE NO LESS THAN 1/2" (13mm) FROM THE ATTACHMENT POINTS OF THE DRAIN CLAMPING RING.
3. ALL BOLTS OR CLAMPS MUST BE IN PLACE TO PROVIDE CONSTANT COMPRESSION ON WATER CUT-OFF MASTIC.
4. FIELD SPLICES MUST BE LOCATED AT LEAST 6 INCHES (152mm) OUTSIDE THE DRAIN SUMP.
5. ROOF DRAIN SIZE AND NUMBER OF DRAINS SHALL BE IN ACCORDANCE WITH THE LOCAL CODES.



*RAPID LOCK TECHNOLOGY IS MAGNIFIED ON SCALE



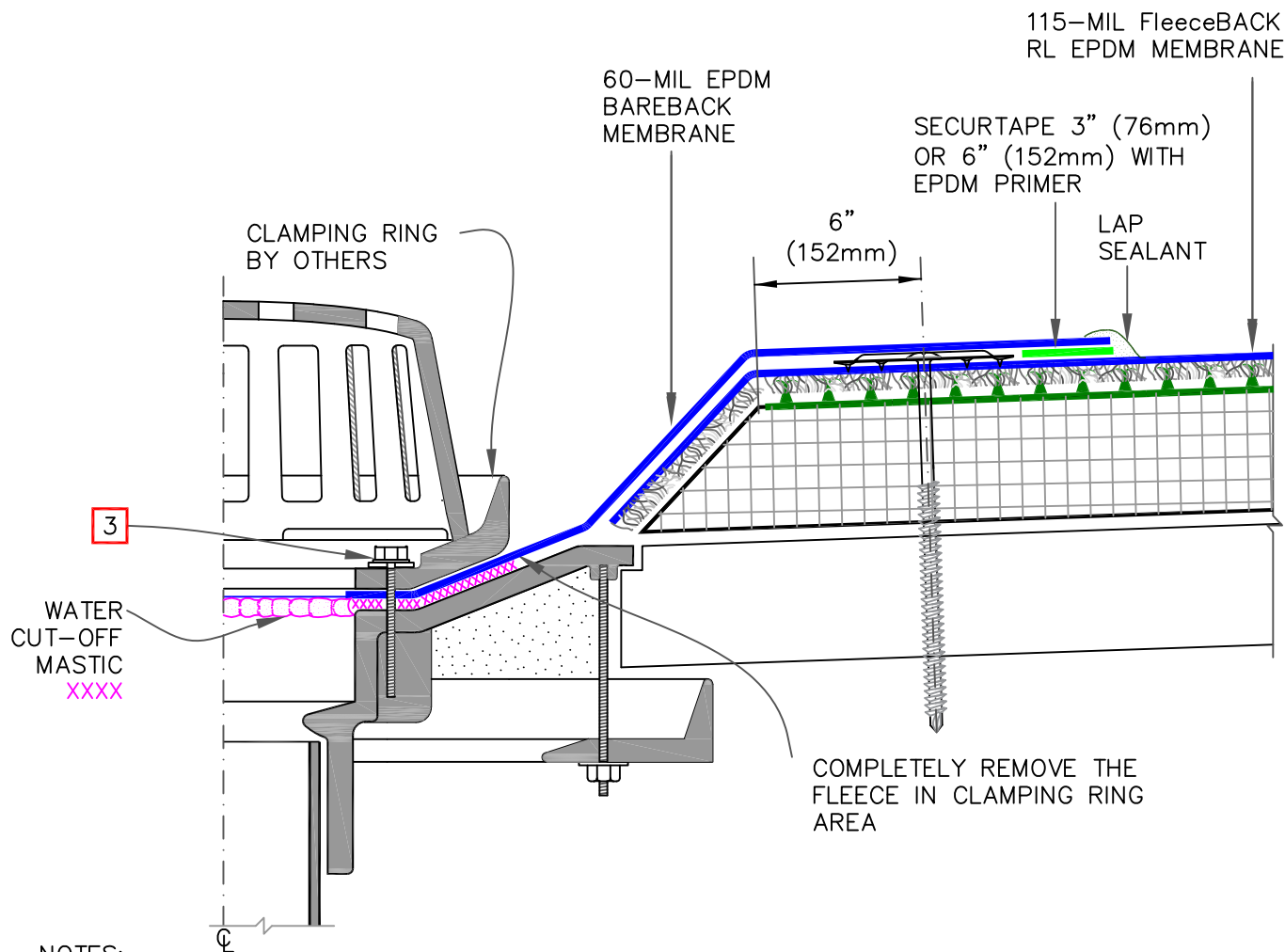
EPDM RL™ (RAPID LOCK) – ROOF DRAIN

For additional information, refer to Specifications

DETAIL NO.

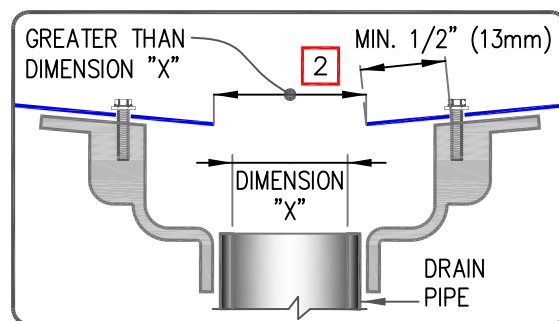
RL-6.1A

RAPID LOCK

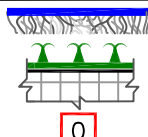


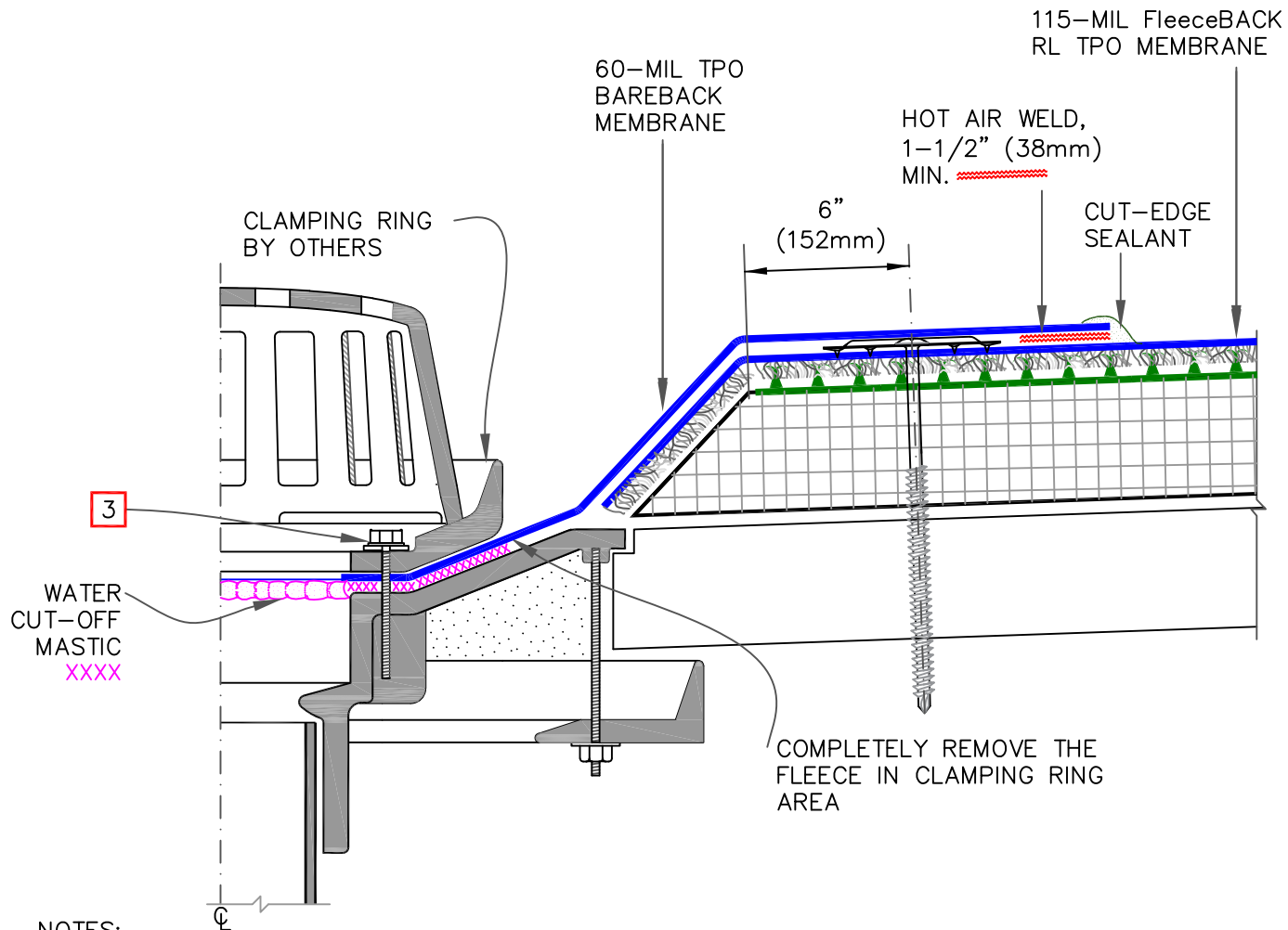
NOTES:

1. REMOVE EXISTING LEAD, FLASHING MATERIAL & ENSURE THE DRAIN RING IS COMPLETELY CLEAN DOWN TO BARE METAL.
2. THE HOLE IN THE MEMBRANE SHALL EXCEED THE DIAMETER OF THE DRAIN PIPE, BUT SHALL BE NO LESS THAN 1/2" (13mm) FROM THE ATTACHMENT POINTS OF THE DRAIN CLAMPING RING.
3. ALL BOLTS OR CLAMPS MUST BE IN PLACE TO PROVIDE CONSTANT COMPRESSION ON WATER CUT-OFF MASTIC.
4. FIELD SPLICES MUST BE LOCATED AT LEAST 6 INCHES (152mm) OUTSIDE THE DRAIN SUMP.
5. ROOF DRAIN SIZE AND NUMBER OF DRAINS SHALL BE IN ACCORDANCE WITH THE LOCAL CODES.



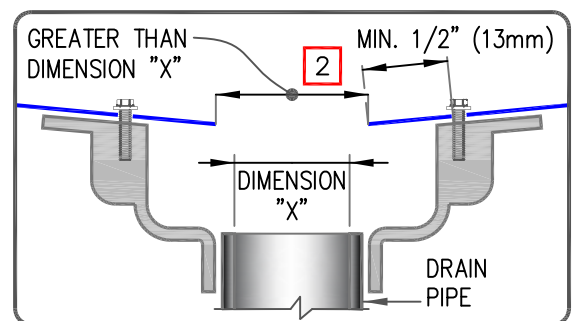
*RAPID LOCK TECHNOLOGY IS MAGNIFIED ON SCALE

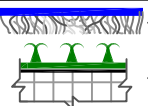
 <p>→ FleeceBACK RL MEMBRANE</p> <p>→ *INSULATION BOARD WITH RAPID LOCK TECHNOLOGY</p> <p>0 → SEE NOTE(S)</p>	<p>EPDM RL™ (RAPID LOCK) – ROOF DRAIN</p> <p>For additional information, refer to Specifications</p>	<p>DETAIL NO.</p> <p>RL-6.1B</p> <p>RAPID LOCK</p>
---	--	--



1. REMOVE EXISTING LEAD, FLASHING MATERIAL & ENSURE THE DRAIN RING IS COMPLETELY CLEAN DOWN TO BARE METAL.
2. THE HOLE IN THE MEMBRANE SHALL EXCEED THE DIAMETER OF THE DRAIN PIPE, BUT SHALL BE NO LESS THAN 1/2" (13mm) FROM THE ATTACHMENT POINTS OF THE DRAIN CLAMPING RING.
3. ALL BOLTS OR CLAMPS MUST BE IN PLACE TO PROVIDE CONSTANT COMPRESSION ON WATER CUT-OFF MASTIC.
4. FIELD SPLICES MUST BE LOCATED AT LEAST 6 INCHES (152mm) OUTSIDE THE DRAIN SUMP.
5. ROOF DRAIN SIZE AND NUMBER OF DRAINS SHALL BE IN ACCORDANCE WITH THE LOCAL CODES.

*RAPID LOCK TECHNOLOGY IS MAGNIFIED ON SCALE



 <p>→ FleeceBACK RL MEMBRANE</p> <p>→ *INSULATION BOARD WITH RAPID LOCK TECHNOLOGY</p> <p>0 → SEE NOTE(S)</p>	<p>TPO RL™ (RAPID LOCK) – ROOF DRAIN</p> <p>For additional information, refer to Specifications</p>	<p>DETAIL NO.</p> <p>RL-6.2B</p> <p>RAPID LOCK</p>
--	---	--