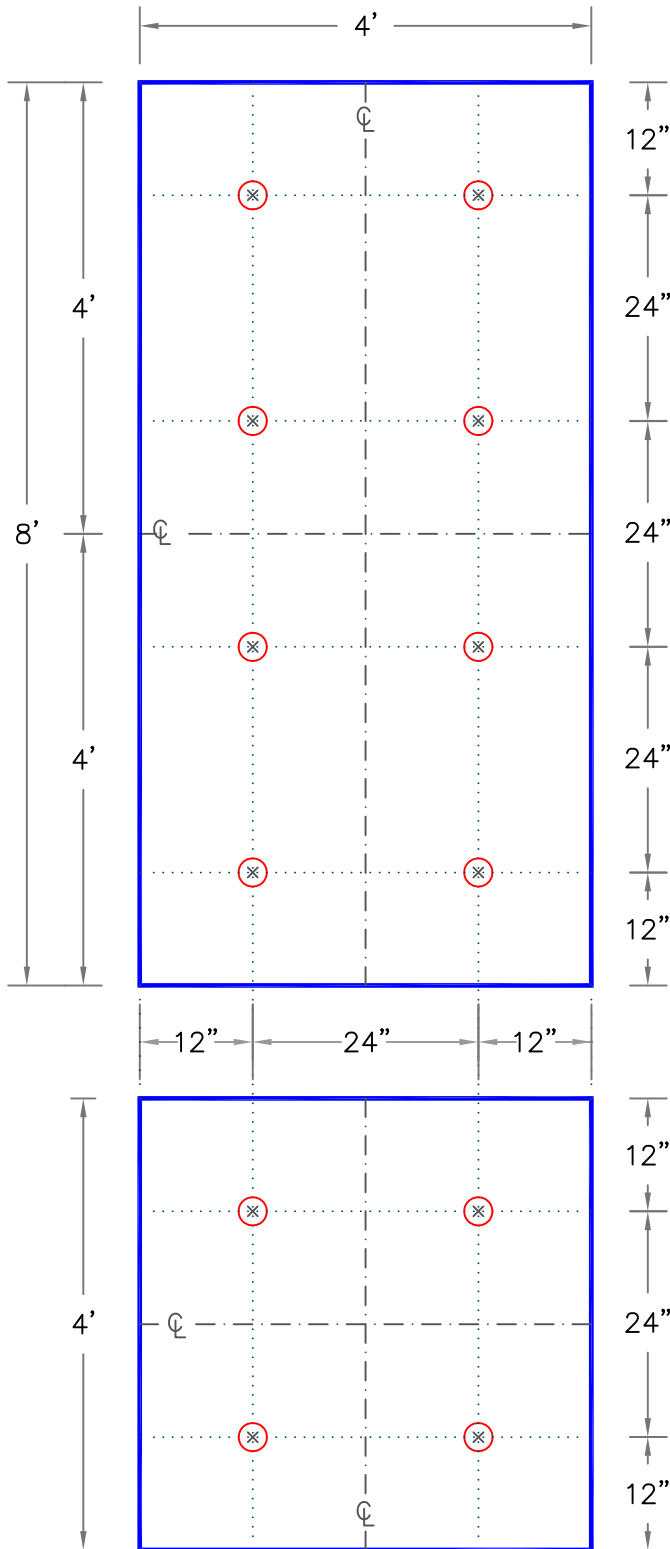


NOTES:

1. THIS DETAIL APPLIES TO 1/4" (6mm) AND 1/2" (13mm) THICK SECUROCK OR DENS DECK PRIME (OVER AN APPROVED INSULATION) WHEN FASTENED INTO 22-GAUGE (0.8mm) STEEL, STRUCTURAL CONCRETE, MINIMUM 15/32" (12mm) PLYWOOD OR 1-1/2" (38mm) THICK WOOD PLANK ROOF DECKS.
2. WHEN ENHANCED FASTENING IS REQUIRED AS PRESCRIBED IN FACTORY MUTUAL LOSS PREVENTION DATA SHEET 1-29, ANSI/SPRI WD-1 OR MIAMI-DADE COUNTY, REFER TO [CARLISLE'S DESIGN REFERENCE DR-05-11](#).
3. FOR CRITERIA ON INSULATION FASTENERS AND PLATES, REFER TO CARLISLE SPECIFICATIONS.
4. IF A WIND SPEED WARRANTY GREATER THAN 55 MILES PER HOUR (25 METERS PER SECOND) OR A WARRANTY TERM GREATER THAN 20-YEARS IS SPECIFIED, ADDITIONAL FASTENING MAY BE REQUIRED, REFER TO CARLISLE SPECIFICATIONS.
5. DETAIL NOT FOR USE OVER ORIENTED STRAND BOARD, GYPSUM, FIBROUS CEMENT (TECTUM), LIGHTWEIGHT INSULATING CONCRETE OR STEEL ROOF DECK LESS THAN 22-GAUGE (0.8mm), [REFER TO DETAIL A-27.1](#) FOR ACCEPTABLE FASTENING.
6. WHEN INSTALLED OVER COMBUSTIBLE WOOD DECKS OR INSULATIONS, ALL JOINTS SHALL BE STAGGERED.
7. LONG UNINTERRUPTED RUNS GREATER THAN 200' (>61 METERS) OF SECUROCK MAY REQUIRE SLIGHT GAPPING DUE TO THERMAL EXPANSION.

FEET TO MILLIMETERS		INCHES TO MILLIMETERS																				
4'	8'	inch	1/8"	1/4"	15/32"	1/2"	5/8"	3/4"	1"	1.5"	2"	2.5"	3"	4"	6"	8"	9"	11"	12"	18"	24"	36"
1219	2438	mm	3	6	12	13	16	19	25	38	51	63	76	102	152	203	229	279	305	457	610	914

FASTENER & PLATE CENTER LINE GUIDE LINE	<p>1/4" OR 1/2" THICK SECUROCK OR DENS DECK PRIME</p> <p>For additional information, refer to Specifications</p>		DETAIL NO. <p>A-27D</p> ADHERED SYSTEM
---	---	--	--



NOTES:

1. THIS DETAIL APPLIES TO 5/8" (16mm) THICK SECUROCK OR DENS DECK PRIME (OVER AN APPROVED INSULATION) WHEN FASTENED INTO 22-GAUGE STEEL, STRUCTURAL CONCRETE, MINIMUM 15/32" (12mm) PLYWOOD OR 1-1/2" (38mm) THICK WOOD PLANK ROOF DECKS.
2. WHEN ENHANCED FASTENING IS REQUIRED AS PRESCRIBED IN FACTORY MUTUAL LOSS PREVENTION DATA SHEET 1-29, ANSI/SPRI WD-1 OR MIAMI-DADE COUNTY, REFER TO [CARLISLE'S DESIGN REFERENCE DR-05-11](#).
3. FOR CRITERIA ON INSULATION FASTENERS AND PLATES, REFER TO CARLISLE SPECIFICATIONS.
4. IF A WIND SPEED WARRANTY GREATER THAN 55 MILES PER HOUR (25 METERS PER SECONDS) OR A WARRANTY TERM GREATER THAN 20-YEARS IS SPECIFIED, ADDITIONAL FASTENING MAY BE REQUIRED, REFER TO CARLISLE SPECIFICATIONS.
5. DETAIL NOT FOR USE OVER ORIENTED STRAND BOARD, GYPSUM, FIBROUS CEMENT (TECTUM), LIGHTWEIGHT INSULATING CONCRETE OR STEEL ROOF DECK LESS THAN 22-GAUGE (0.8mm), [REFER TO DETAIL A-27.1](#) FOR ACCEPTABLE FASTENING.
6. WHEN INSTALLED OVER COMBUSTIBLE WOOD DECKS OR INSULATIONS, ALL JOINTS SHALL BE STAGGERED.
7. LONG UNINTERRUPTED RUNS GREATER THAN 200' (> 61M) OF SECUROCK MAY REQUIRE SLIGHT GAPPING DUE TO THERMAL EXPANSION.

FEET TO MILLIMETERS		INCHES TO MILLIMETERS																				
4'	8'	inch	1/8"	1/4"	15/32"	1/2"	5/8"	3/4"	1"	1.5"	2"	2.5"	3"	4"	6"	8"	9"	11"	12"	18"	24"	36"
1219	2438	mm	3	6	12	13	16	19	25	38	51	63	76	102	152	203	229	279	305	457	610	914

	FASTENER & PLATE	5/8" THICK SECUROCK OR DENS DECK PRIME		DETAIL NO.
	CENTER LINE			A-27E
	GUIDE LINE	For additional information, refer to Specifications		ADHERED SYSTEM

CARLISLE'S AUTHORIZED APPLICATORS MARKETING ANNOUNCEMENT

ID-2015-02

Reduced Fastener Assemblies

February 2, 2015

To: Carlisle SynTec Systems' Authorized Applicators

Carlisle SynTec Systems, in conjunction with USG Roofing Solutions, recently obtained Factory Mutual approvals (RoofNav numbers pending) for reduced fastening requirements for cover boards in fully adhered assemblies. These approvals are **exclusive to Carlisle Construction Materials roof systems** that utilize USG SECUROCK® Gypsum-Fiber Roof Board underneath fully adhered single-ply membranes. The reduced fastening requirements are outlined in the table below:

Product Thickness	FM Rating	Fasteners (existing)	Fasteners (updated)	Square Feet per Fastener (updated)
1/4"	FM 1-90	16	10	3.20
3/8"	FM 1-90	16	8	4.00
1/2"	FM 1-90	10	8	4.00
1/2"	FM 1-75	N/A	6	5.33
5/8"	FM 1-90	8	6	5.33

Please consult Carlisle's Project Review and Design Department regarding the enhanced fastening requirements for projects requiring extended warranty duration and/or increased wind speed coverage.

The use of Carlisle's InsulFast™ fasteners and new SecurFast™ Plates is required in assemblies utilizing the updated fastening requirements. Ordering information for SecurFast Plates can be found in the table below:

SecurFast Plates	
Direct ship item	
Product Code	324735
Packaging	Plastic pails
Pieces/Carton	1,000
Weight/Carton	38 lbs.
Cartons/Skid	40
Ships From	Wyomissing, PA Durant, IA Atlanta, GA Sacramento, CA

CARLISLE'S AUTHORIZED APPLICATORS MARKETING ANNOUNCEMENT

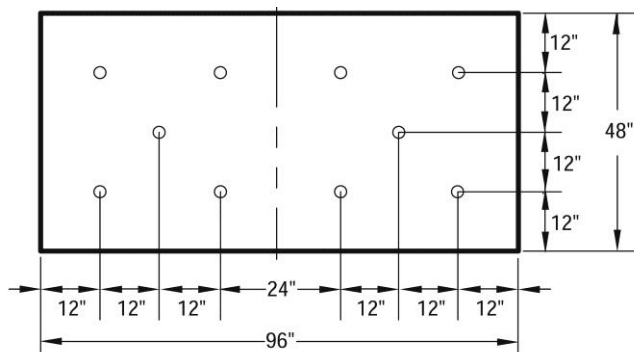
If you have any questions, or for more information, please contact your local Manufacturer's Representative.

Sincerely,

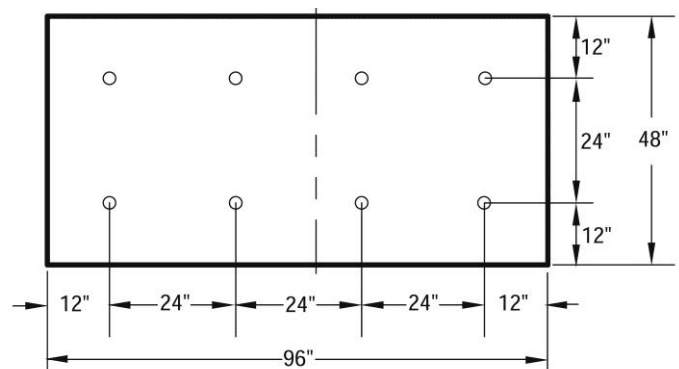


Chad Buhrman
CCM Insulation Product Manager

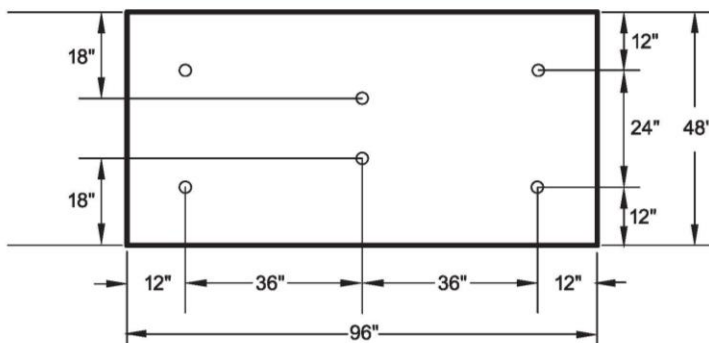
10 Fastener Pattern



8 Fastener Pattern



6 Fastener Pattern



SecurFast Plate

