

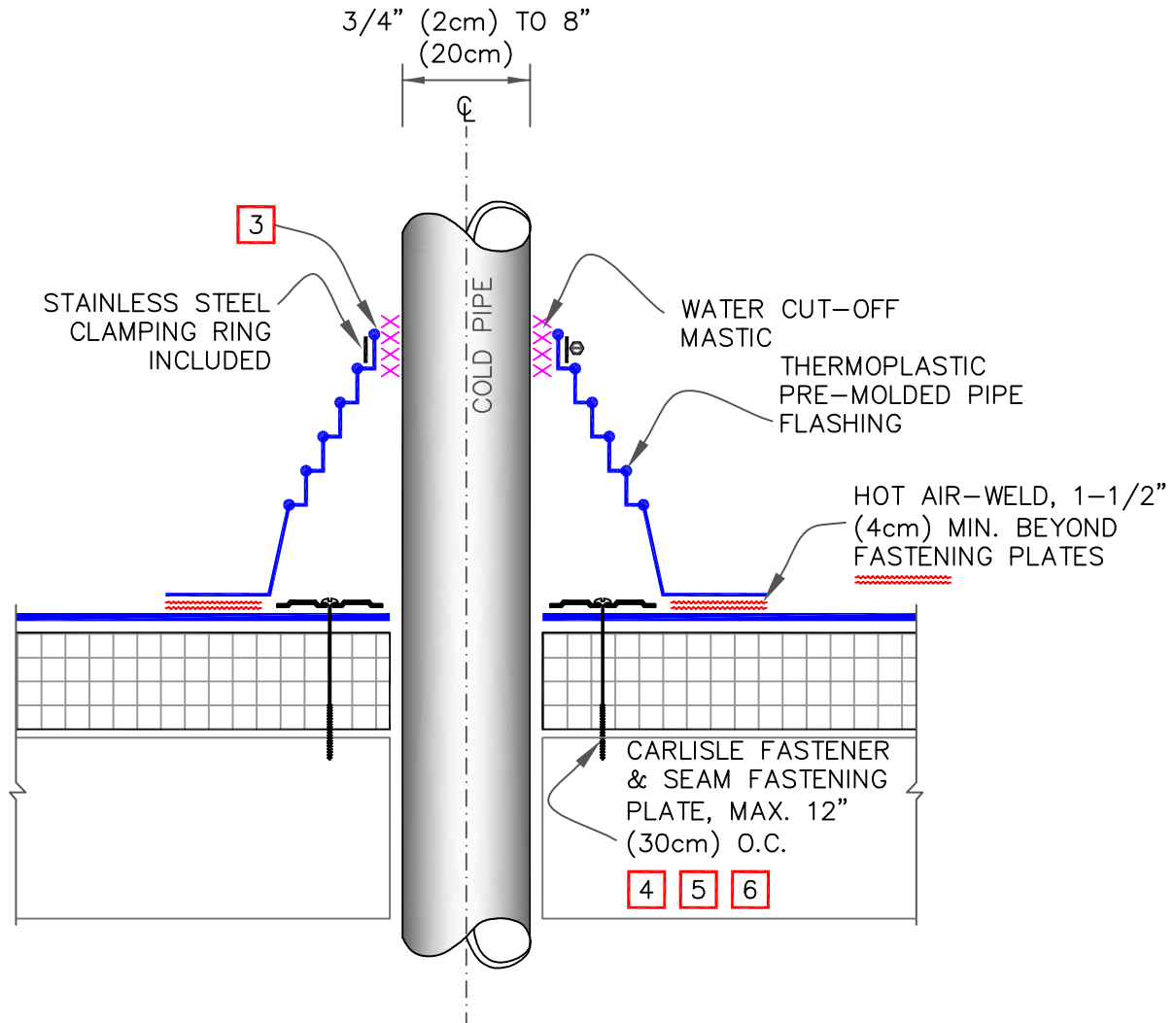


My Documents

# My Documents







## Table of Contents

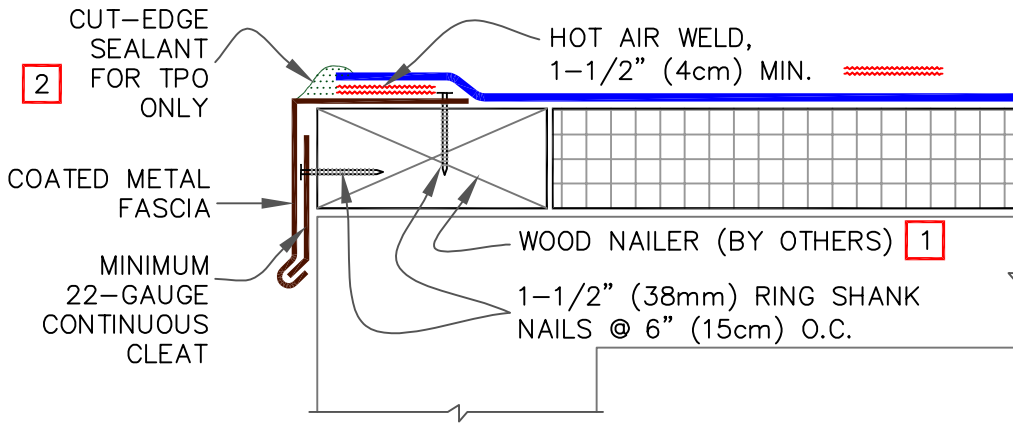
1.	U-8A Pre-Molded Pipe Flashing	3
2.	U-1B SecurWeld Coated Drip Edge Fascia	4
3.	A-1A.1 Carlisle SecurEDGE 200-Projects with 25 and 30-Year Warranties	5
4.	U-8A.1 Pre-Molded Pressure-Sensitive Pipe Seal with 90-mil Membrane or 25 / 30-year Warranties	6
5.	U-8E Pre-Fabricated Split Pipe Seal	7
6.	U-15H Outside Corner Detail for Projects with 90-mil Membrane or 25 / 30-Year Warranties	8
7.	U-15D Pre-Molded Outside Corner Flashing	9
8.	U-1A.1 SECURSEAL DRIP EDGE FASCIA - PROJECTS WITH 90-MIL MEMBRANE OR 25/ 30 YEAR WARRANTIES	10
9.	U-15D.1 Inside Corner Detail for Projects with 90-mil membrane or 25 / 30-Year Warranties	11
10.	U-8B.1 Field-Fabricated Pipe / Structural Steel Tube Flashing for 25/30 Year Warranties	12
11.	U-2A.1 EPDM EPDM MEMBRANE SPLICES (25 / 30 YEAR WARRANTIES)	13
12.	A-2 EPDM Membrane Splice (25/30 Year Warranties)	14
13.	U-8AT Pre-Molded Pipe Flashing	15
14.	FB-2A.1 EPDM Membrane Splices- Projects with 145-mil Membrane or 25 and 30- Year Warranties	16
15.	U-1F SecurEDGE 300 Detail (25/30 Year Warranties)	17
16.	B-2 Membrane Splice (25/30 Year Warranties)	18
17.	U-2D SecurTAPE Splice Intersection (25/30 Year Warranties)	19
18.	MF-2E SecurTAPE Splice Intersection (25/30 Year Warranties)	20
19.	MF-2D Membrane Splice (25/30 Year Warranties)	21



NOTES:

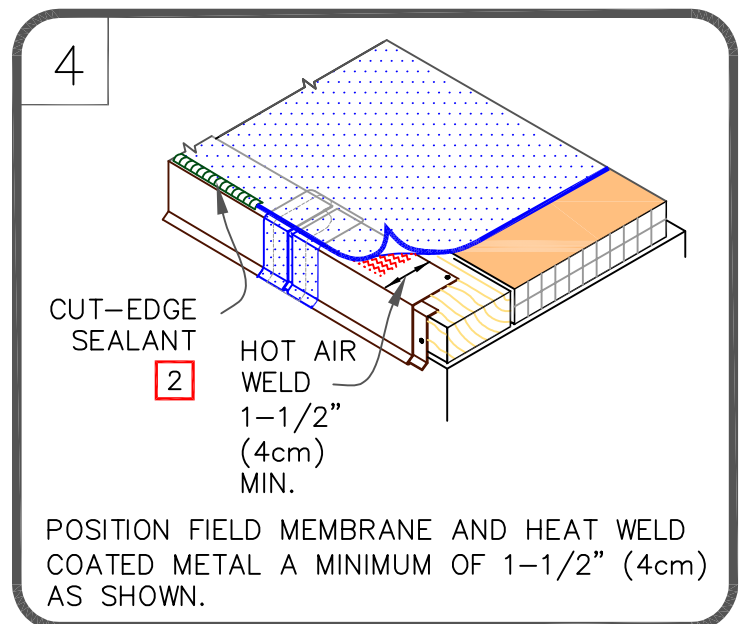
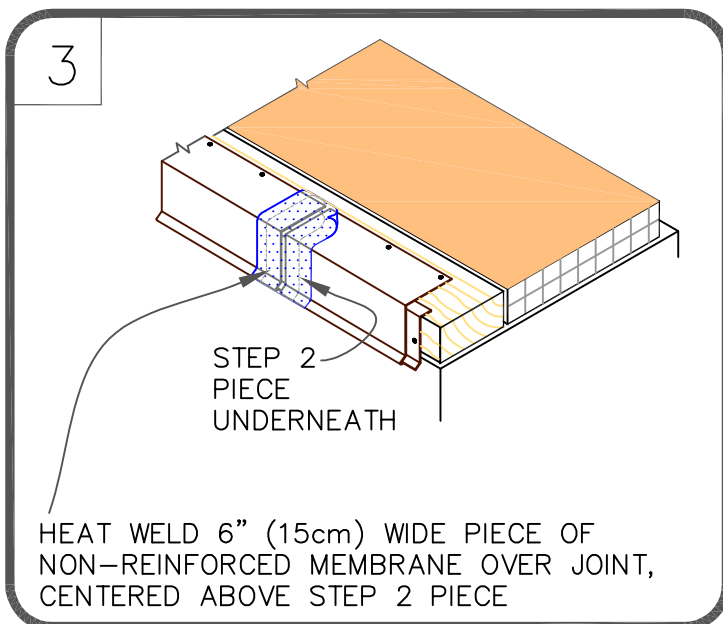
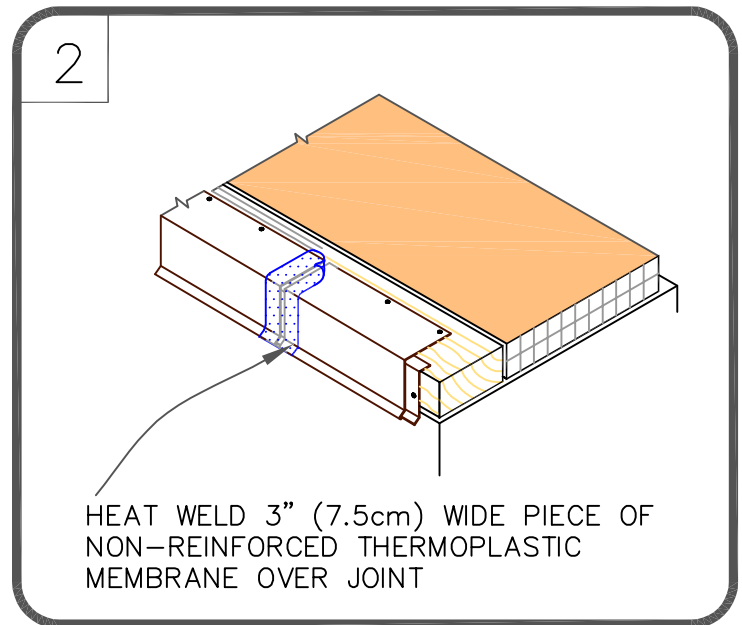
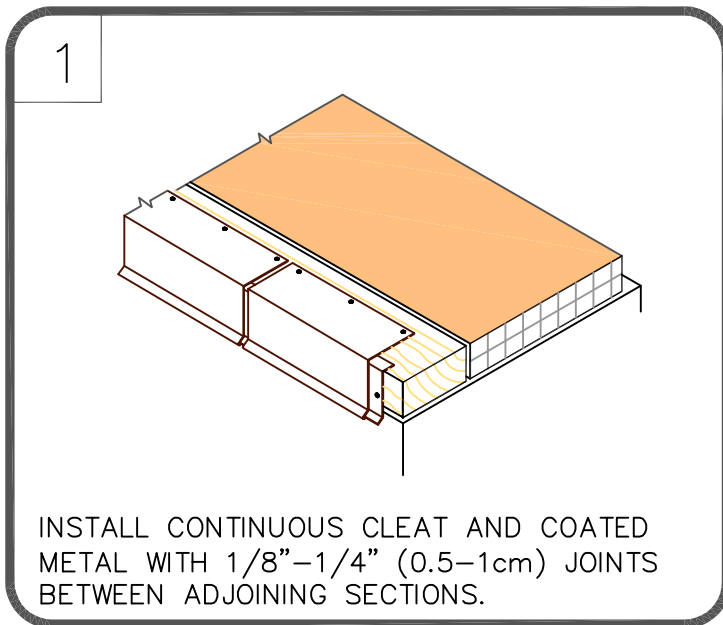
1. REMOVE ALL EXISTING LEAD AND FLASHING MATERIAL BEFORE INSTALLING PRE-MOLDED PIPE FLASHING.
2. TEMPERATURE OF THE PIPE PENETRATION MUST NOT EXCEED 140°F (60°C) WHEN USING PVC AND 160°F (71°C) WHEN USING TPO FLASHING.
3. PRE-MOLDED PIPE FLASHING MUST HAVE INTACT RIB AT THE TOP EDGE REGARDLESS OF PIPE DIAMETER.
4. INSTALL A MINIMUM OF 4 FASTENERS AND PLATES AROUND THE PIPE, EQUALLY SPACED. IF FASTENERS AND PLATES CANNOT BE INSTALLED AS SHOWN, THEY MAY ALSO BE POSITIONED OUTSIDE THE PIPE MAXIMUM 12" (30cm) O.C. AND FLASHED WITH THERMOPLASTIC REINFORCED MEMBRANE / TPO CUT-EDGE SEALANT. REFER TO [DETAIL U-8B.](#)
5. FASTENERS AND PLATES ARE NOT REQUIRED ON ADHERED SYSTEMS UNLESS PIPE DIAMETER EXCEEDS 18" (46cm).
6. ON MECHANICALLY FASTENED SYSTEMS, HP-X FASTENERS AND PIRANHA PLATES OR HP-XTRA FASTENERS AND PIRANHA XTRA PLATES ARE REQUIRED OVER STEEL AND WOOD DECKS. ON CONCRETE DECKS, CD-10 OR HD 14-10 FASTENERS ARE USED WITH PIRANHA PLATES.

<p>  THERMOPLASTIC REINFORCED MEMBRANE   APPROVED INSULATION   SEE NOTE(S)                 </p>	<p style="text-align: center;">PRE-MOLDED PIPE FLASHING</p> <p style="text-align: center;">For additional information, refer to Specifications</p>	<table border="1" style="width: 100%;"> <tr> <td style="text-align: center;"></td> <td style="text-align: center;">DETAIL NO.</td> </tr> <tr> <td></td> <td style="text-align: center;">U-8A</td> </tr> <tr> <td colspan="2" style="text-align: center;">THERMOPLASTIC UNIVERSAL</td> </tr> </table>		DETAIL NO.		U-8A	THERMOPLASTIC UNIVERSAL	
	DETAIL NO.							
	U-8A							
THERMOPLASTIC UNIVERSAL								



NOTES:

1. WOOD NAILER MUST EXTEND PAST TOTAL WIDTH OF METAL FASCIA DECK FLANGE.
2. APPROXIMATELY 1/8" (0.5cm) DIAMETER BEAD OF CUT-EDGE SEALANT IS REQUIRED ON CUT EDGES OF REINFORCED TPO MEMBRANE.



	● THERMOPLASTIC REINFORCED MEMBRANE
	● APPROVED INSULATION
[0]	● SEE NOTE(S)

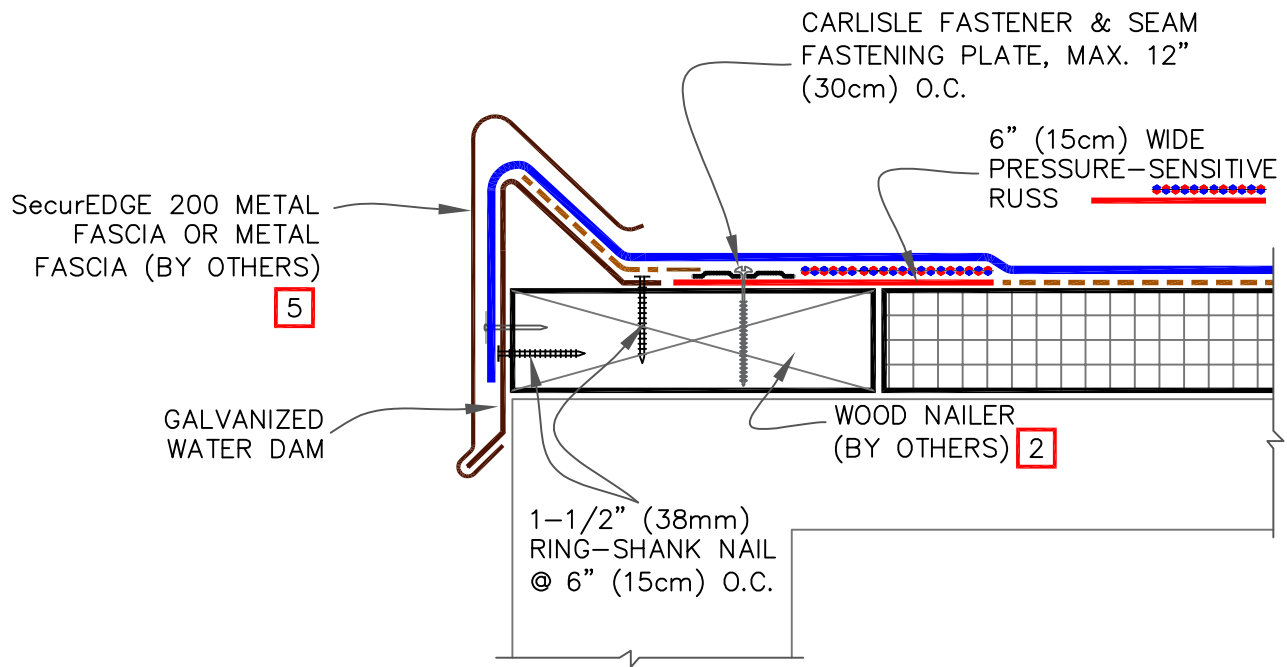
SecurWELD COATED DRIP EDGE FASCIA

For additional information, refer to Specifications

	DETAIL NO.
	U-1B
THERMOPLASTIC UNIVERSAL	

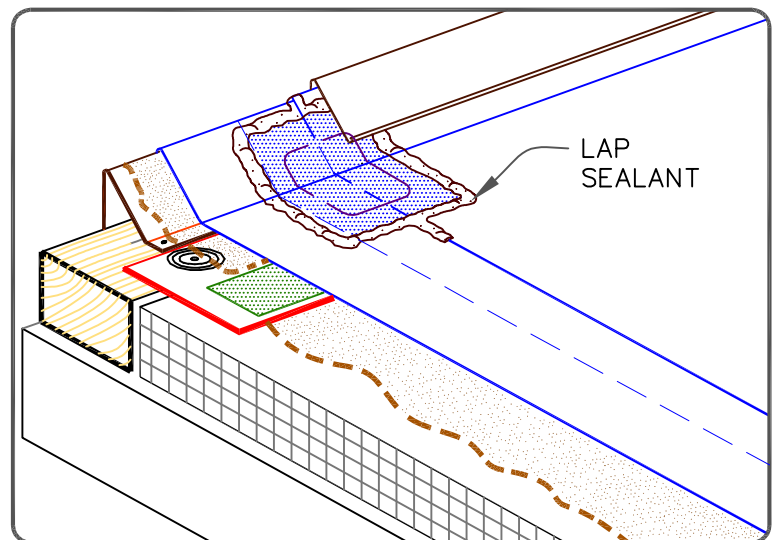
CAUTION

WHEN A WARRANTY WIND SPEED GREATER THAN 90 MPH IS SPECIFIED, CARLISLE FASTENERS AND SEAM FASTENING PLATES SHALL NOT EXCEED 6" (15cm) ON CENTER.



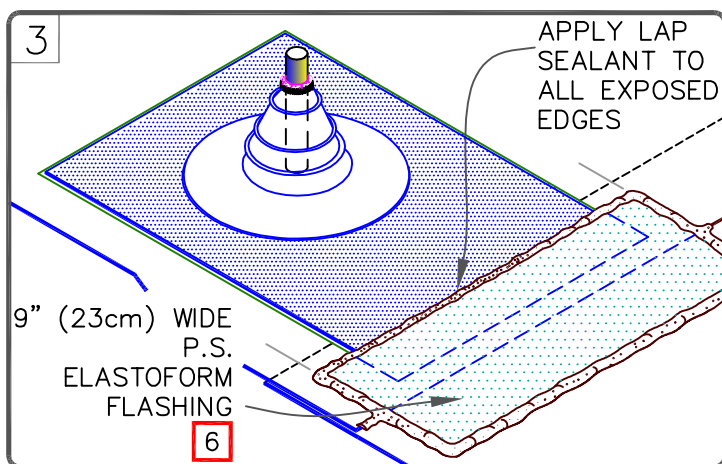
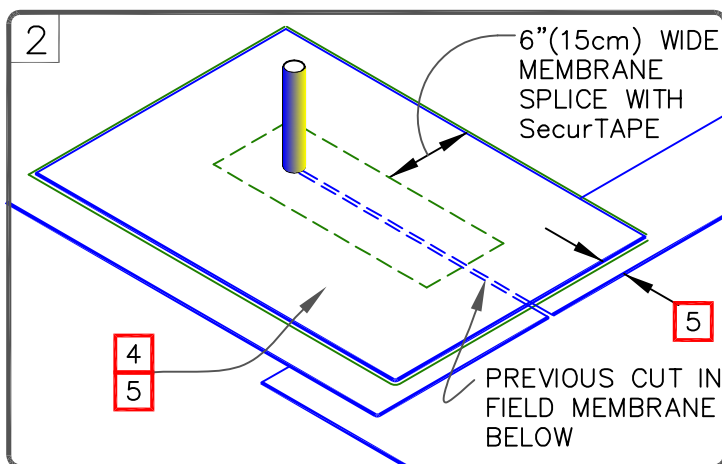
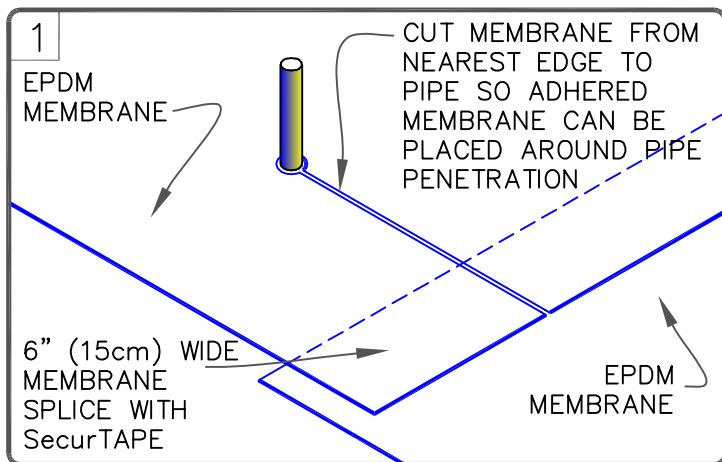
NOTES:

1. REFER TO [SecurEdge 200 INSTALLATION INSTRUCTION MANUAL](#) FOR STEP-BY-STEP INSTALLATION PROCEDURES.
2. WOOD NAILER MUST EXTEND PAST TOTAL WIDTH OF GRAVEL STOP DECK FLANGE.
3. APPLY EPDM PRIMER TO THE MEMBRANE SURFACE PRIOR TO INSTALLING PRESSURE-SENSITIVE ELASTOFORM FLASHING.
4. FIELD SPLICES AT THE ANGLE CHANGE SHALL BE OVERLAID WITH TWO LAYERS OF PRESSURE-SENSITIVE ELASTOFORM FLASHING. THE BOTTOM LAYER SHALL BE 6" (15cm) WIDE COVERED WITH A 12" WIDE TOP LAYER (30cm). BOTH LAYERS SHALL BE CENTERED AND SEALED WITH CONTINUOUS LAP SEALANT.
5. WHEN METAL FASCIA BY OTHERS IS USED, FASTENER TYPE AND FASTENING FREQUENCY SHALL BE RECOMMENDED BY METAL EDGE MANUFACTURER.



<p>  → EPDM   → BONDING ADHESIVE   → APPROVED SUBSTRATE  <div style="border: 1px solid red; display: inline-block; padding: 2px;">0</div> → SEE NOTE(S)                 </p>	<p><b>CARLISLE SecurEDGE 200</b> (25 / 30-YEAR WARRANTIES)</p> <p>For additional information, refer to Specifications</p>		<p>DETAIL NO. <b>A-1A.1</b></p> <p>ADHERED EPDM</p>
--	---	--	---

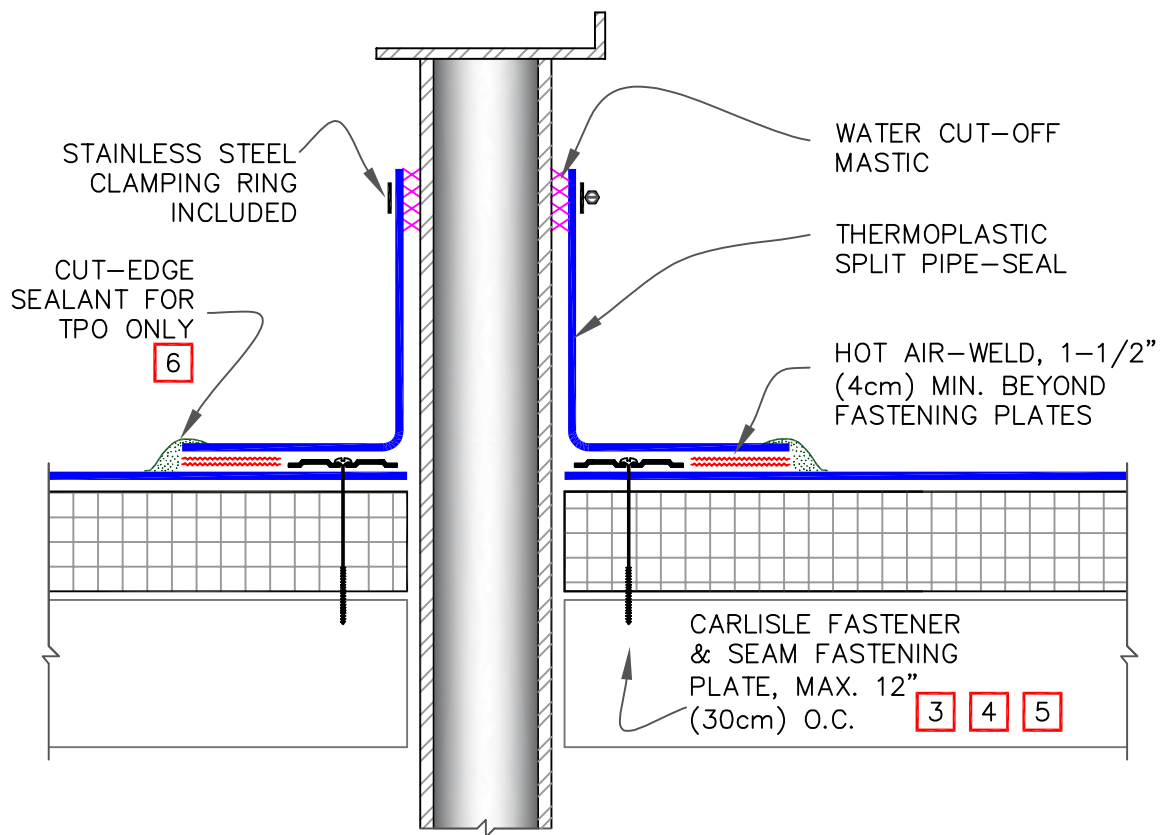




NOTES:

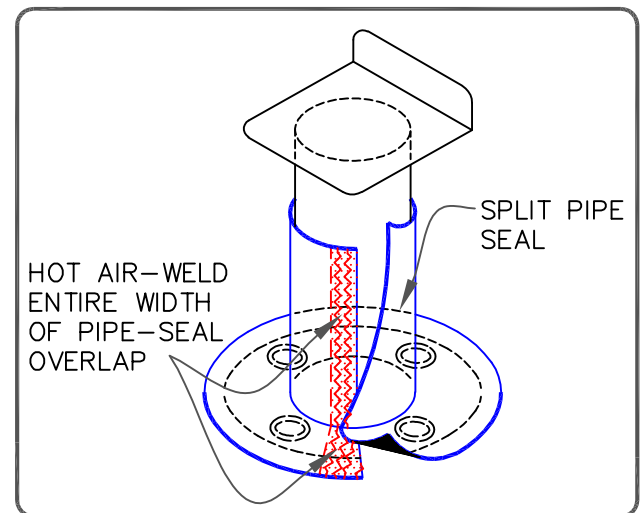
1. REMOVE ALL LEAD AND OTHER FLASHING BEFORE INSTALLING PRESSURE-SENSITIVE PIPE SEAL.
2. PIPE SEAL MUST HAVE INTACT RIB AT TOP EDGE, REGARDLESS OF PIPE DIAMETER.
3. DECK FLANGES OF THE MOLDED PIPE SEAL SHALL NOT BE OVERLAPPED, CUT OR APPLIED OVER ANY ANGLE CHANGE.
4. 60-MIL EPDM OR 20" (51cm) PRESSURE-SENSITIVE CURED EPDM FLASHING.
5. AT THE CUT IN THE FIELD MEMBRANE, FLASHING OVERLAY MUST EXTEND 3" (7.5cm) BEYOND THE MOLDED PIPE FLASHING FLANGE ON 3 SIDES AND WITHIN 1" (2.5cm) OF THE EDGE OF THE FIELD MEMBRANE, AS SHOWN.
6. CENTER 9" (23cm) WIDE PRESSURE-SENSITIVE ELASTOFORM FLASHING OVER THE MEMBRANE SPLICE EDGE AND EXTEND 3" (7.5cm) BEYOND THE MEMBRANE OVERLAY, AS SHOWN.
7. SEAL ALL EDGES WITH CONTINUOUS LAP SEALANT.

<p>—• EPDM</p> <p>—• APPROVED SUBSTRATE</p> <p>0 —• SEE NOTE(S)</p>	<p>PRE-MOLDED PRESSURE-SENSITIVE PIPE SEAL WITH 90-MIL MEMBRANE OR 25 / 30 YEAR WARRANTIES</p> <p>For additional information, refer to Specifications</p>	<p>DETAIL NO.</p> <p>U-8A.1</p> <p>THERMOSET UNIVERSAL</p>
---	---	--



## NOTES:

1. REMOVE ALL EXISTING LEAD AND FLASHING MATERIAL BEFORE INSTALLING SPLIT PIPE FLASHING.
2. TEMPERATURE OF THE PIPE PENETRATION MUST NOT EXCEED 140°F (60°C) WHEN USING PVC AND 160°F (71°C) WHEN USING TPO.
3. INSTALL A MINIMUM OF 4 FASTENERS AND PLATES AROUND THE PIPE, EQUALLY SPACED. IF FASTENERS AND PLATES CANNOT BE INSTALLED AS SHOWN, THEY MAY ALSO BE POSITIONED OUTSIDE THE PIPE MAXIMUM 12" (30cm) O.C. AND FLASHED WITH THERMOPLASTIC REINFORCED MEMBRANE/CUT-EDGE SEALANT. REFER TO [DETAIL U-8B](#).
4. FASTENERS AND PLATES ARE NOT REQUIRED ON ADHERED SYSTEMS UNLESS PIPE DIAMETER EXCEEDS 18" (46cm).
5. ON MECHANICALLY FASTENED SYSTEMS, HP-X FASTENERS AND PIRANHA PLATES OR HP-XTRA FASTENERS AND PIRANHA XTRA PLATES ARE REQUIRED OVER STEEL AND WOOD DECKS. ON CONCRETE DECKS, CD-10 OR HD 14-10 FASTENERS ARE USED WITH PIRANHA PLATES.
6. APPROXIMATELY 1/8" (0.5cm) DIAMETER BEAD OF CUT-EDGE SEALANT IS REQUIRED ON CUT EDGES OF REINFORCED TPO MEMBRANE ONLY.
7. T-JOINT COVERS ARE NOT REQUIRED ON STANDARD COLORS (WHITE, TAN, GRAY), FOR ADDITIONAL COLORS IT IS REQUIRED TO COVER T-JOINTS.



	● THERMOPLASTIC REINFORCED MEMBRANE	CFA CERTIFIED PRE-FABRICATED SPLIT PIPE SEAL		DETAIL NO.
	● APPROVED INSULATION			U-8E
	● SEE NOTE(S)	For additional information, refer to Specifications	THERMOPLASTIC UNIVERSAL	

1

FASTEN MEMBRANE AND FLASH CURB OR WALL WITH CURED EPDM MEMBRANE FOLLOWING STANDARD PROCEDURES USING BONDING ADHESIVE AND SecurTAPE AT MEMBRANE SPLICE.

2

USE PRE-CUT T-JOINT COVERS OR CUT A 6"x6" (15X15cm) & 12"x12" (30X30cm) SECTION OF PRESSURE- SENSITIVE ELASTOFORM FLASHING AND ROUND CORNERS

3

CLEAN THE DRY SPLICE AREA OF THE EPDM WITH EPDM PRIMER; APPLY LAP SEALANT 1/2" (1.5cm) MIN. FROM THE CURB AS SHOWN IN STEP 4.

4

REMOVE & REPLACE POLY BACKING ON FLASHING. FOLD 6"x6" (15cmX15cm) FLASHING IN HALF WITH ROUNDED PORTION TURNED UP. CENTER ON CORNER & FIRMLY PRESS AGAINST VERTICAL SURFACE

5

ROLL & CREASE FLASHING TIGHTLY INTO ANGLE CHANGE & FIRMLY ROLL FLASHING ONTO THE DECK MEMBRANE

USE HEAT GUN TO WARM THE FLASHING IN COLD WEATHER

6

AFTER ADHERING, ROLL WITH A TWO INCH WIDE STEEL HAND ROLLER. PAY PARTICULAR ATTENTION TO THE STEP OFFS AND ANGLE CHANGES

7

ROLL STEP OFFS AND ANGLE CHANGES

8

CLEAN THE SPLICE AREA WITH EPDM PRIMER. INSTALL THE 12"x12" (30cmX30cm) SECTION OF PRESSURE- SENSITIVE ELASTOFORM FLASHING TO EXTEND A MINIMUM 2" BEYOND THE PREVIOUSLY APPLIED 6"x6" (15cmX15cm) FLASHING (STEPS 4-6).

9

SEAL ALL EDGES WITH LAP SEALANT AS SHOWN

—• EPDM

—• APPROVED SUBSTRATE

0 —• SEE NOTE(S)

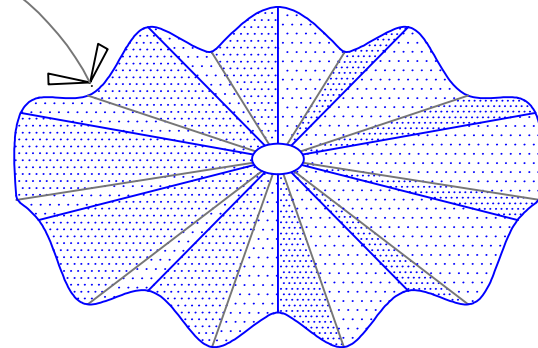
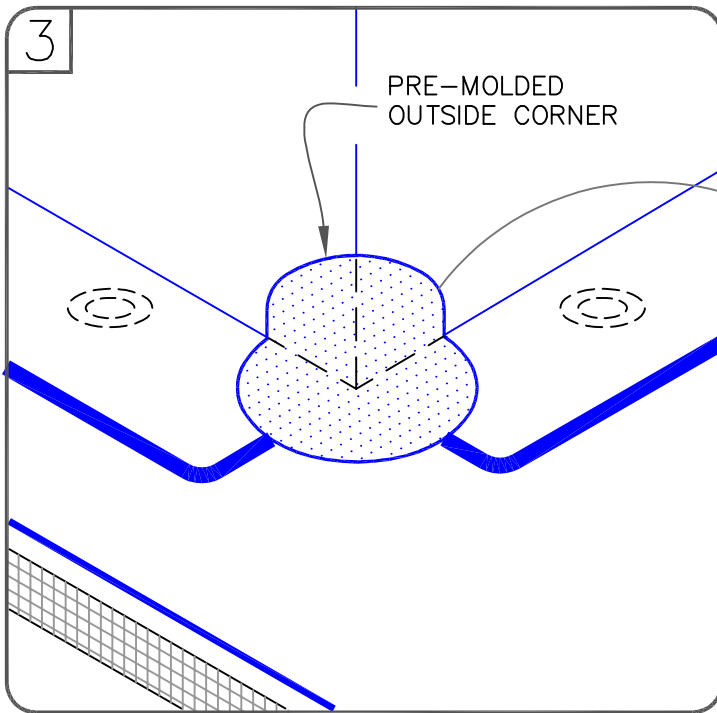
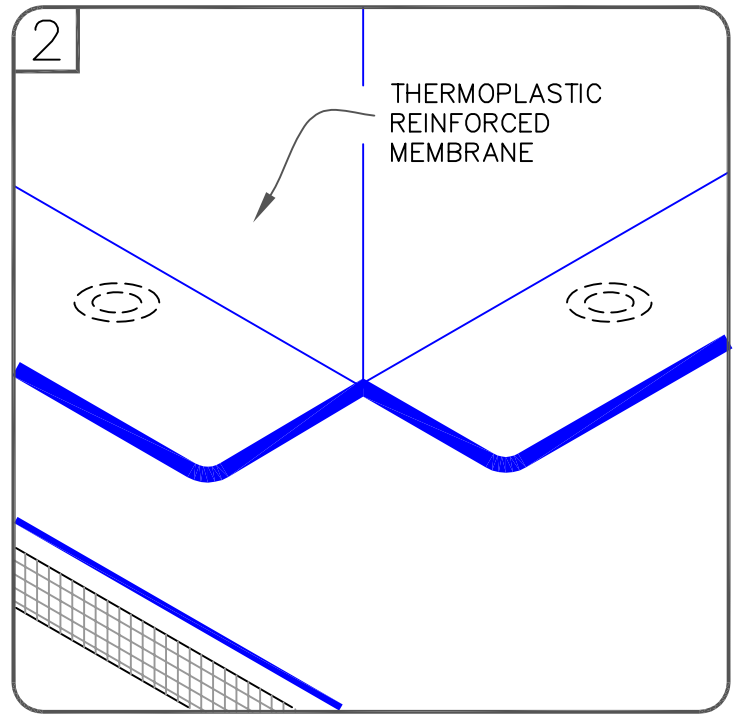
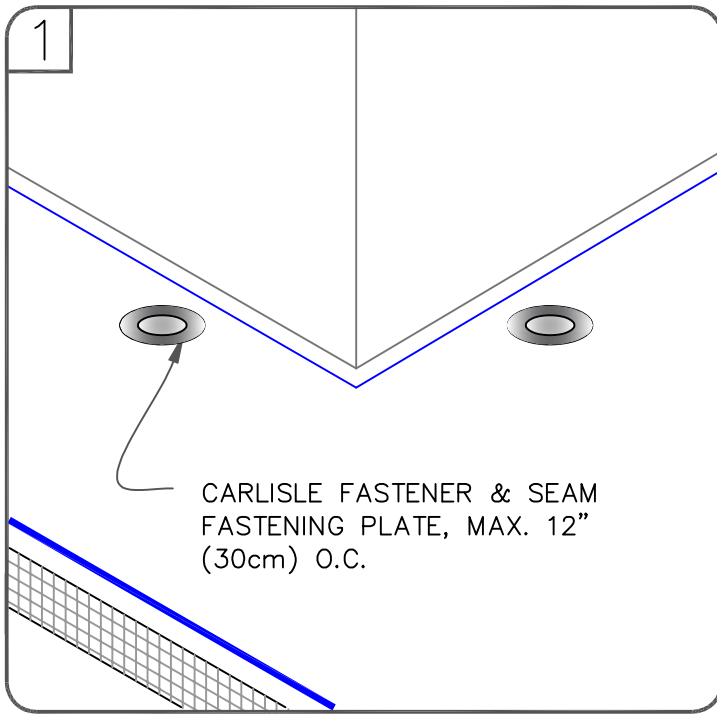
OUTSIDE CORNER FLASHING FOR PROJECTS WITH 90-MIL MEMBRANE OR 25 / 30 YEAR WARRANTIES

For additional information, refer to Specifications

DETAIL NO. U-15H

THERMOSET UNIVERSAL







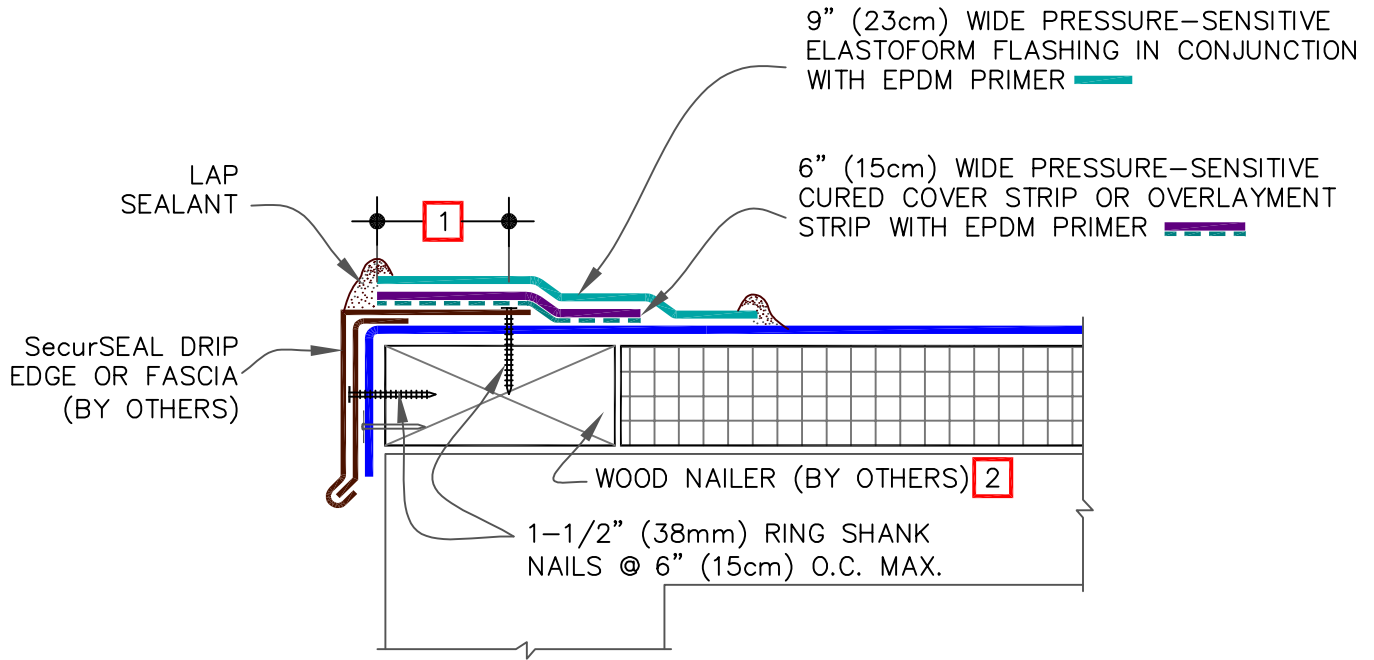


PRE-MOLDED OUTSIDE CORNER BEFORE INSTALLATION

NOTES:

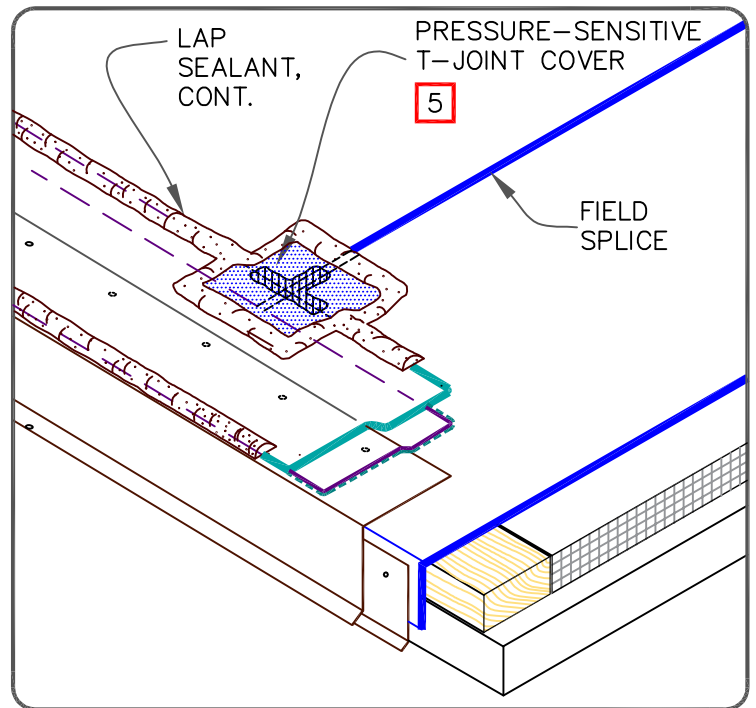
1. POSITION FASTENING PLATES 6" (15cm) FROM THE CORNER AND 1/2" TO 1" (1.5 TO 2.5cm) FROM EDGE OF MEMBRANE.
2. APPROXIMATELY 1/8" (0.5cm) DIAMETER BEAD OF CUT-EDGE SEALANT IS REQUIRED ON CUT EDGES OF REINFORCED TPO MEMBRANE.
3. REFER TO CARLISLE SPECIFICATIONS FOR ACCEPTABLE CARLISLE FASTENERS AND PLATES.

<p>  THERMOPLASTIC REINFORCED MEMBRANE   APPROVED INSULATION   SEE NOTE(S)                 </p>	<p>PRE-MOLDED OUTSIDE CORNER FLASHING</p> <p>For additional information, refer to Specifications</p>	<p>  </p> <p>DETAIL NO. U-15D</p> <p>THERMOPLASTIC UNIVERSAL</p>
--	--	---

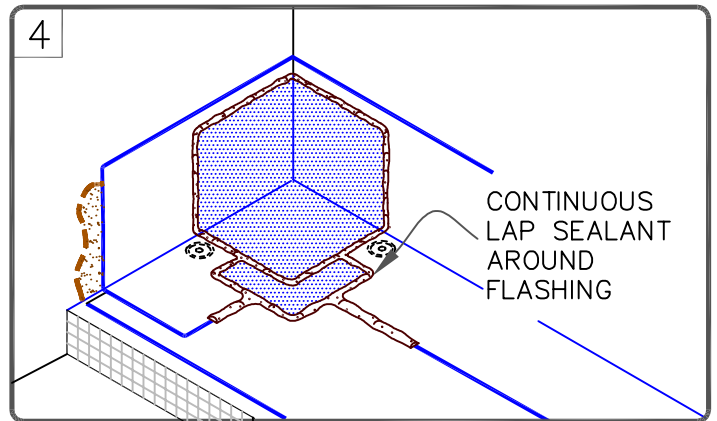
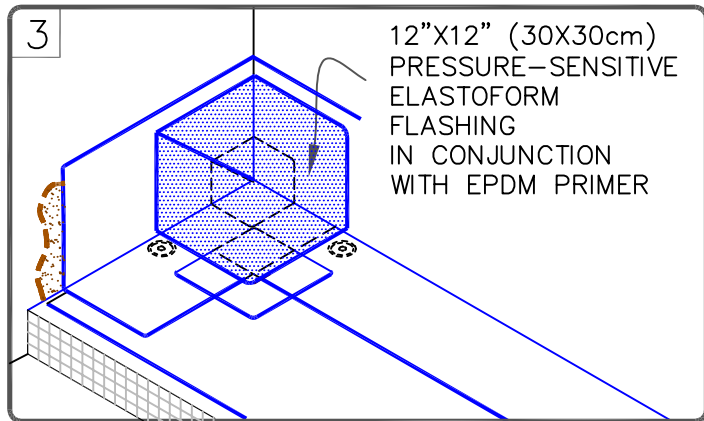
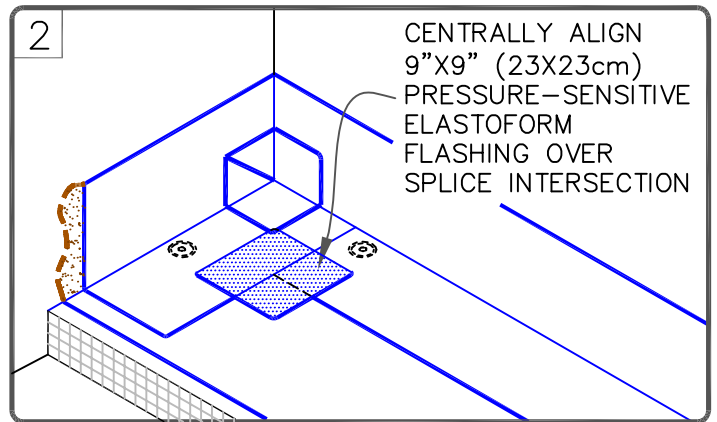
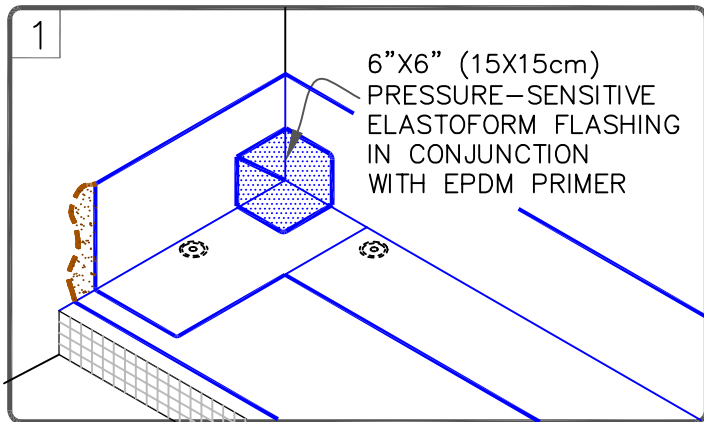


NOTES:

1. DECK FLANGE MUST BE TOTALLY COVERED WITH MINIMUM 2" (5cm) COVERAGE PAST NAIL HEADS.
2. WOOD NAILER MUST EXTEND PAST TOTAL WIDTH OF METAL EDGE.
3. TO REMOVE FINISHING OILS, SCRUB METAL FLANGE WITH WEATHERED MEMBRANE CLEANER; ALLOW TO DRY PRIOR TO APPLYING PRIMER.
4. LAP SEALANT MUST BE APPLIED AT FLASHING OVERLAPS AND INTERSECTIONS WITH JOINTS IN METAL EDGING.
5. ALL SPLICE INTERSECTIONS MUST BE OVERLAID WITH PRESSURE-SENSITIVE T-JOINT COVERS AND SEALED WITH CONTINUOUS LAP SEALANT. PRIOR TO DOING SO, APPLY LAP SEALANT ALONG THE LEADING EDGE OF THE MEMBRANE SPLICE (UNDER THE 6"x6" (15X15cm) T-JOINT COVER) COVERING THE EXPOSED SPLICE TAPE 1/2" (1.5cm) IN ALL DIRECTIONS FROM THE SPLICE INTERSECTION.
6. REFER TO APPLICABLE [CARLISLE METAL EDGING INSTRUCTION MANUAL](#) FOR STEP-BY-STEP INSTALLATION PROCEDURES.
7. DETAIL NOT FOR USE WITH DESIGN "B" (BALLASTED STONE ASSEMBLY).



	EPDM	SecurSeal DRIP EDGE FASCIA- PROJECTS WITH 90-MIL MEMBRANE OR 25 / 30 YEAR WARRANTIES  For additional information, refer to Specifications		DETAIL NO.
	APPROVED SUBSTRATE			U-1A.1
<span style="border: 1px solid black; padding: 2px;">0</span>	SEE NOTE(S)			THERMOSET UNIVERSAL

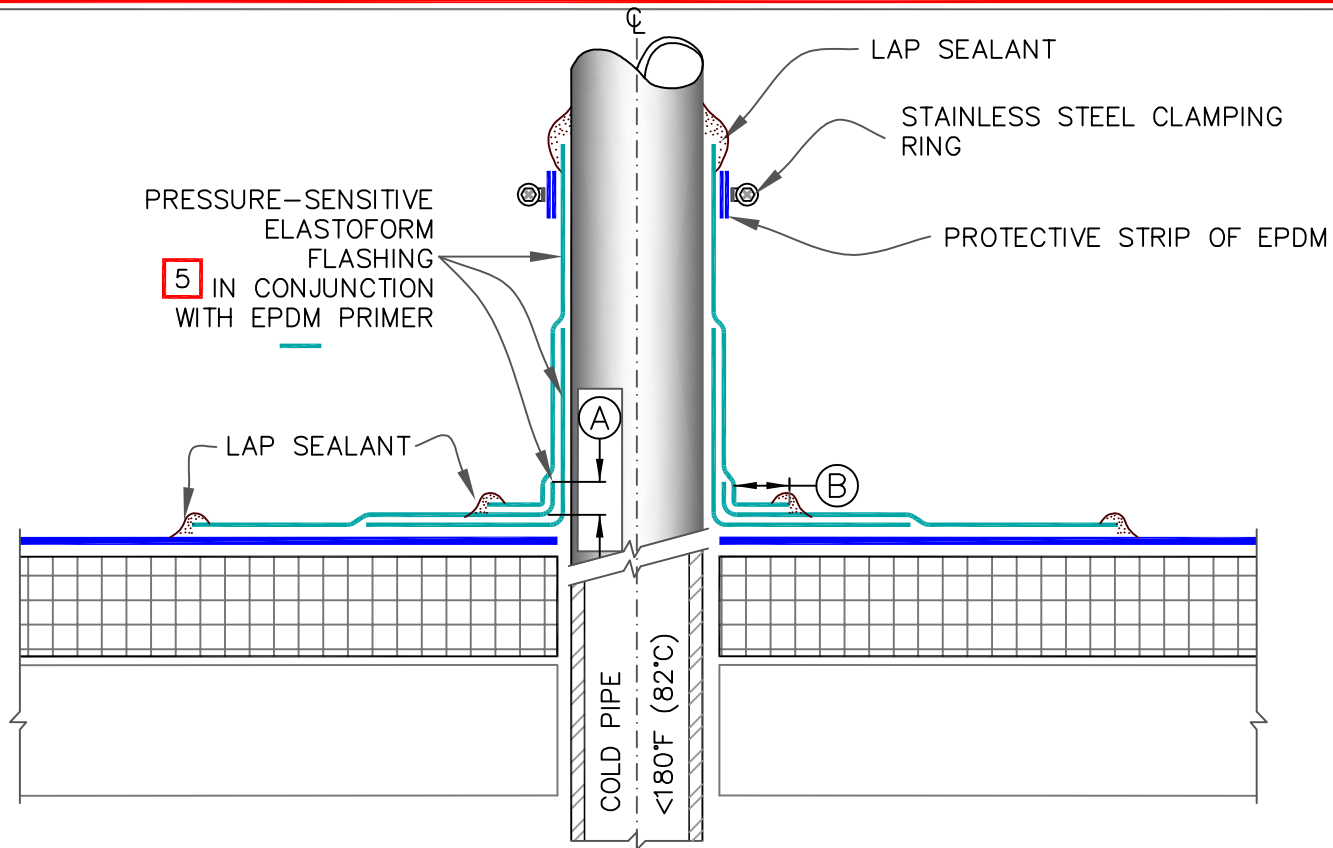


NOTES:

1. FOR PROJECTS WITH 25 AND 30-YEAR WARRANTIES OR WHEN USING 90-MIL MEMBRANE, ALL INSIDE CORNERS MUST BE OVERLAID WITH TWO LAYERS OF PRESSURE-SENSITIVE FLASHING. THE BOTTOM LAYER SHALL BE A 7"X9" (17.5cm X 23cm) PRESSURE-SENSITIVE PRE-CUT INSIDE/OUTSIDE CORNER OR A 6"X6" (15cm X 15cm) PRESSURE-SENSITIVE ELASTOFORM FLASHING PIECE COVERED WITH A 12"X12" (30cm X 30cm) TOP LAYER OF PRESSURE-SENSITIVE ELASTOFORM FLASHING. BOTH LAYERS SHALL BE CENTERED AND SEALED WITH CONTINUOUS LAP SEALANT.
2. EPDM PRIMER MUST BE APPLIED TO ALL SPLICE AREAS AND FOR EACH LAYER OF PRESSURE-SENSITIVE FLASHING.

<p>—• EPDM</p> <p>—• APPROVED SUBSTRATE</p> <p>0 —• SEE NOTE(S)</p>	<p>INSIDE CORNER FLASHING FOR PROJECTS WITH 90-MIL MEMBRANE OR 25 / 30 YEAR WARRANTIES</p> <p>For additional information, refer to Specifications</p>	<p>DETAIL NO. U-15D.1</p> <p>THERMOSET UNIVERSAL</p>
---	---	--

**CAUTION** WHEN A PRE-MOLDED PIPE SEAL IS NOT FEASIBLE, PROJECTS WITH 25 & 30-YEAR WARRANTIES REQUIRE ALL ROUND PIPE PENETRATIONS & STRUCTURAL STEEL TUBING TO BE WRAPPED WITH THREE LAYERS OF PRESSURE-SENSITIVE ELASTOFORM FLASHING, TERMINATED WITH A STAINLESS STEEL CLAMPING RING & SEALED WITH CONTINUOUS LAP SEALANT (AS SHOWN).



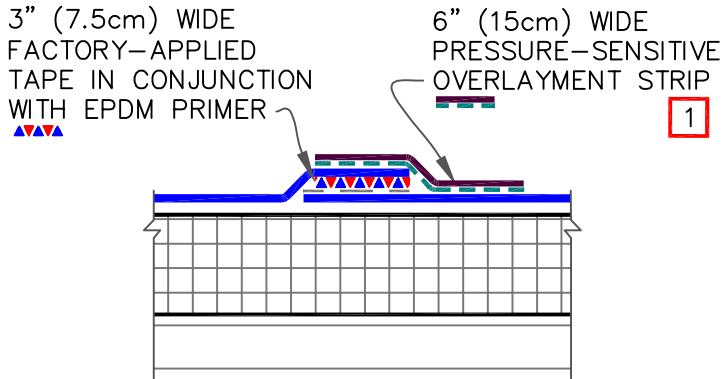
NOTES:

1. REMOVE ALL LEAD AND OTHER FLASHING BEFORE INSTALLING FIELD-FABRICATED FLASHING.
2. TEMPERATURE OF PIPE PENETRATION MUST NOT EXCEED 180°F (82°C).
3. PIPE FLASHING MAY BE USED WITH SQUARE OR RECTANGULAR STRUCTURAL TUBING WITH ROUNDED CORNERS.
4. FOR STRUCTURAL STEEL TUBING GREATER THAN 12" (30cm) ACROSS, USE [DETAIL\(S\) U-5.](#)
5. EPDM PRIMER MUST BE APPLIED TO THE MATING SURFACES PRIOR TO APPLYING PRESSURE-SENSITIVE ELASTOFORM FLASHING.
6. IN COLDER TEMPERATURES, A HEAT GUN MUST BE USED WHEN FORMING PRESSURE-SENSITIVE ELASTOFORM FLASHING.
7. ON MECHANICALLY FASTENED ROOFING SYSTEMS, ADDITIONAL MEMBRANE SECUREMENT IS REQUIRED. REFER TO [DETAIL MF-8B.](#)
8. MEMBRANE SECUREMENT IS REQUIRED AROUND ALL ROUND PIPE PENETRATIONS GREATER THAN 18" (46cm) IN DIAMETER.

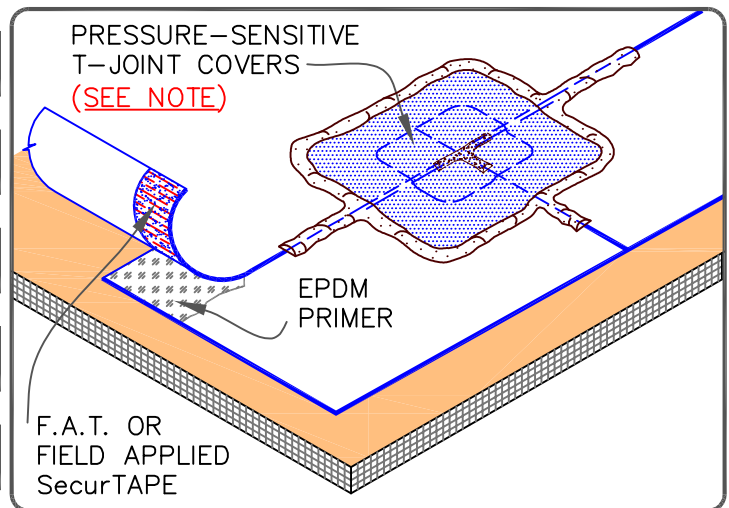
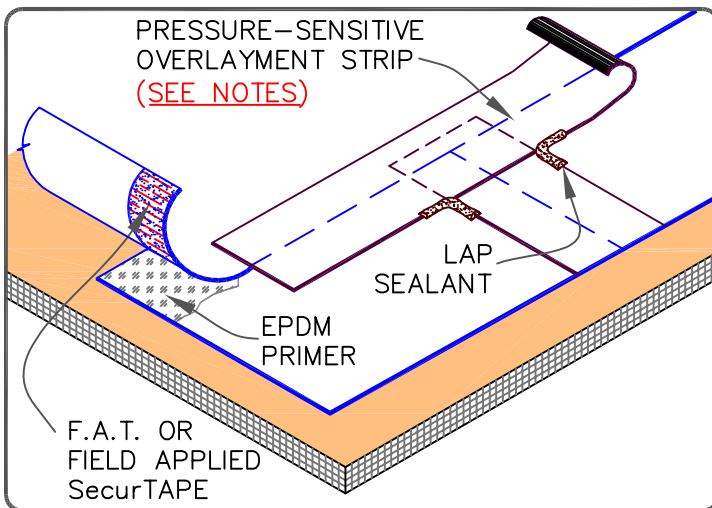
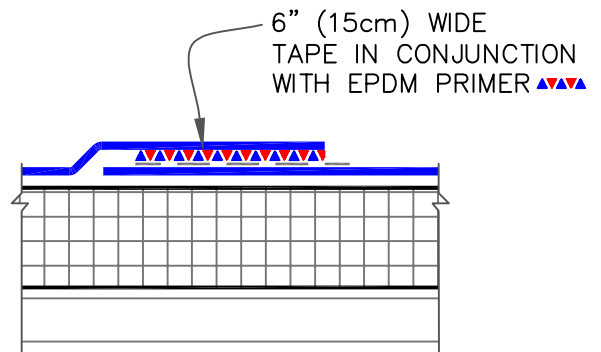
DIMENSIONS		cm	
(A)	1/2"	1.5	MIN.
(B)	1"	2.5	MIN.

—• EPDM —• APPROVED SUBSTRATE —• SEE NOTE(S)	FIELD FABRICATED PIPE / STRUCTURAL STEEL TUBE FLASHING (25/30 YEAR WARRANTIES) For additional information, refer to Specifications		DETAIL NO. U-8B.1
			THERMOSET UNIVERSAL

OPTION 1



OPTION 2



F.A.T. (FACTORY APPLIED SecurTAPE)

NOTES:

- PROJECTS WITH 25-YEAR WARRANTIES, TAPE SPLICES MAY BE A MINIMUM 3" (7.5cm) WIDE FACTORY APPLIED TAPE (FAT). IN ADDITION, OVERLAY THE ENTIRE FIELD SPLICE WITH A CONTINUOUS 6" (15cm) WIDE PRESSURE-SENSITIVE OVERLAYMENT STRIP.
- APPLY LAP SEALANT AT ALL INTERSECTIONS BETWEEN PRESSURE-SENSITIVE OVERLAYMENT STRIP.

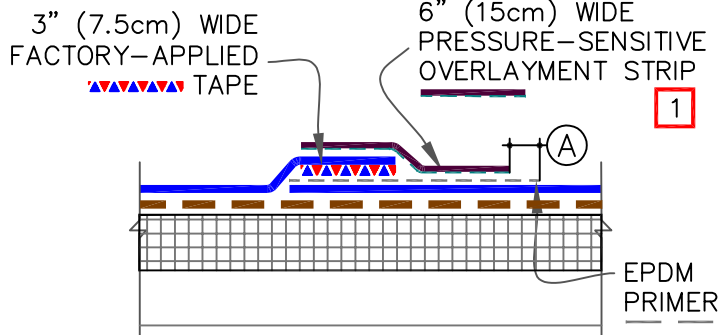
NOTE:

PROJECTS WITH 25-YEAR WARRANTIES, TAPE SPLICES MUST BE A MINIMUM 6" (15cm) WIDE FACTORY APPLIED SecurTAPE (F.A.T). ALL SPLICE INTERSECTIONS MUST BE OVERLAID WITH TWO LAYERS OF PRESSURE-SENSITIVE ELASTOFORM FLASHING. APPLY LAP SEALANT ALONG THE LEADING EDGE OF THE MEMBRANE SPLICE COVERING 1/2" (1.5cm) IN ALL DIRECTIONS FROM THE SPLICE INTERSECTION AND OVERLAY WITH A 6"X6" (15cm X 15cm) T-JOINT COVER A SECOND LAYER OF 12"X12" (30cm X 30cm) PRESSURE-SENSITIVE T-JOINT COVER IS REQUIRED. BOTH LAYERS SHALL BE CENTERED OVER THE SPLICE INTERSECTION AND SEALED WITH CONTINUOUS LAP SEALANT.

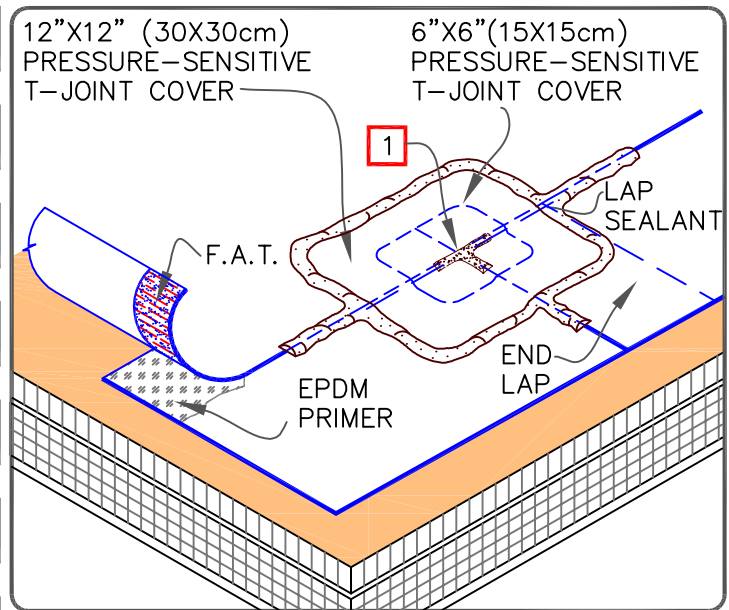
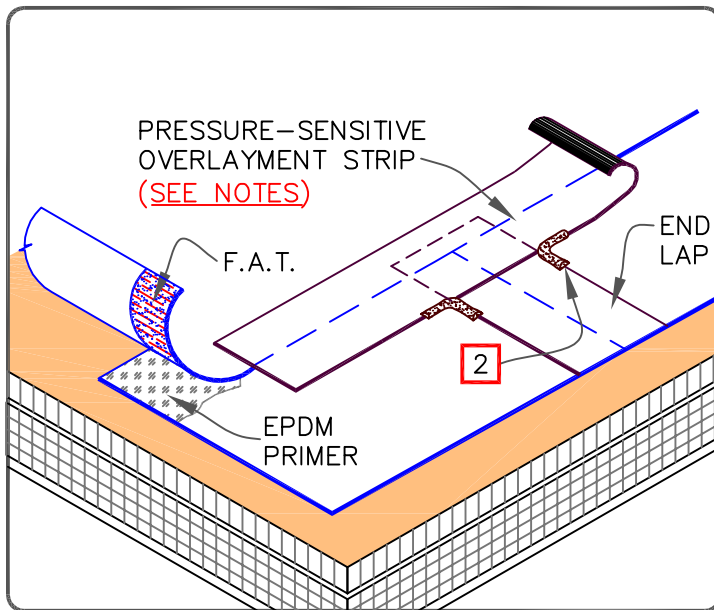
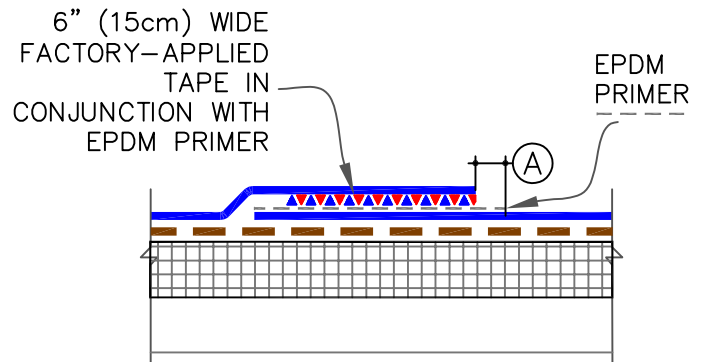
<p>—• EPDM</p> <p>—• APPROVED SUBSTRATE</p> <p>0 —• SEE NOTE(S)</p>	<p>EPDM MEMBRANE SPLICES (25 / 30 YEAR WARRANTIES)</p> <p>For additional information, refer to Specifications</p>	<p>DETAIL NO. U-2A.1</p> <p>THERMOSET UNIVERSAL</p>
---	---	---



OPTION 1



OPTION 2



NOTES:

1. TAPE SPLICES MAY BE A MINIMUM 3" (7.5cm) WIDE FACTORY APPLIED TAPE (FAT). IN ADDITION, OVERLAY THE ENTIRE FIELD SPLICE WITH A CONTINUOUS 6" (15cm) WIDE PRESSURE-SENSITIVE OVERLAYMENT STRIP.
2. APPLY LAP SEALANT AT ALL INTERSECTIONS BETWEEN PRESSURE-SENSITIVE OVERLAYMENT STRIP.

NOTE:

1. APPLY LAP SEALANT ALONG THE LEADING EDGE OF THE MEMBRANE SPLICE COVERING 1/2" (1.5cm) IN ALL DIRECTIONS FROM THE SPLICE INTERSECTION AND OVERLAY WITH A 6"X6" (15X15cm) T-JOINT COVER. A SECOND LAYER OF 12"X12" (30X30cm) PRESSURE-SENSITIVE T-JOINT COVER IS REQUIRED.

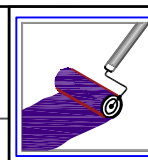
DIMENSION	cm
(A) 1/8" TO 1/2"	0.5 TO 1.5

F.A.T. (FACTORY APPLIED SecurTAPE)

— EPDM
   
 - - - BONDING ADHESIVE
   
 APPROVED SUBSTRATE
   
 0 — SEE NOTE(S)

EPDM MEMBRANE SPLICES  
(25 / 30 YEAR WARRANTIES)

For additional information, refer to Specifications



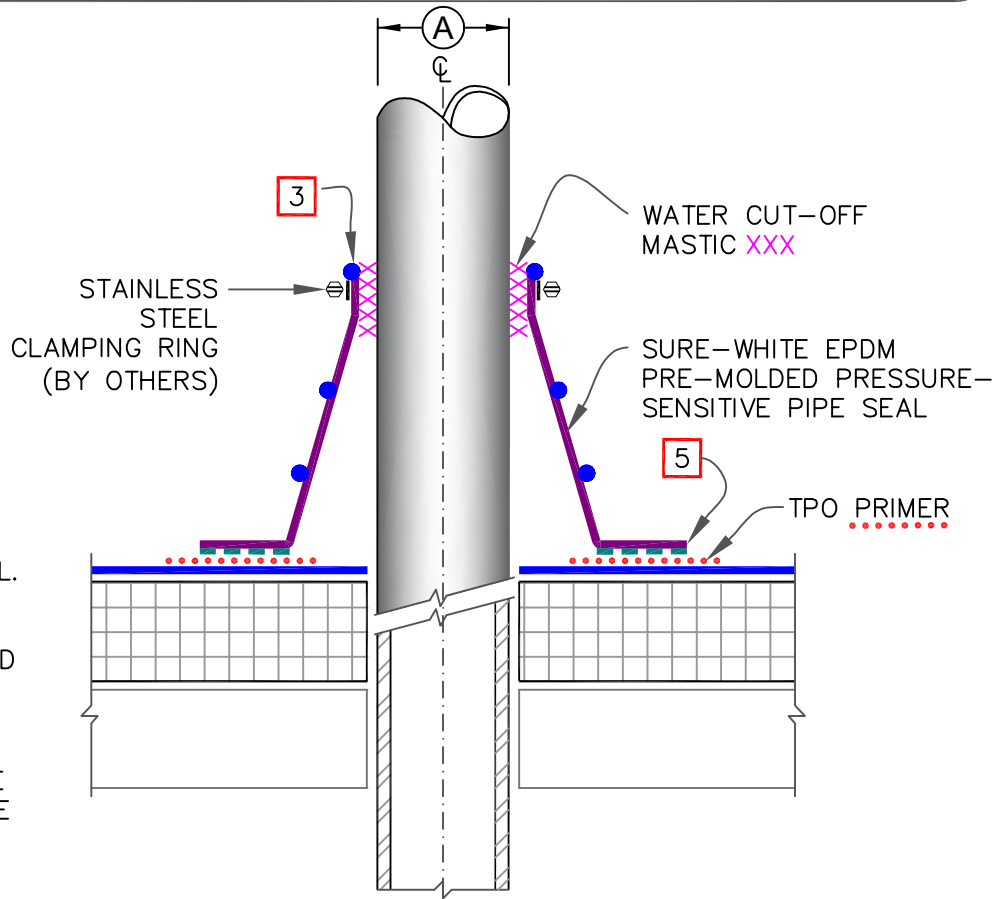
DETAIL NO.

A-2

ADHERED EPDM

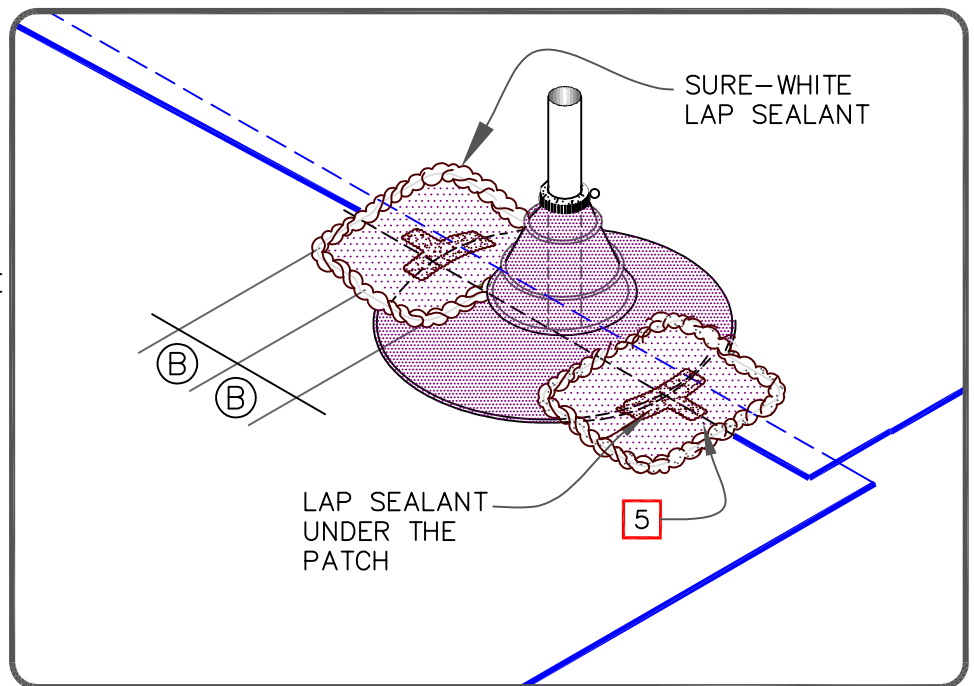
WARRANTY REQUIREMENTS	20 YEAR WARRANTY	SEE DETAIL BELOW
	25 OR 30 YEAR WARRANTY	REFER TO CARLISLE TYPICAL TPO DETAIL <a href="#">U-8A</a> . NO FIELD-FABRICATION ALLOWED FOR 25/30 YEAR ROOF.

DIMENSIONS		cm	
(A)	1/2"	1.5	TO
	6"	15	
(B)	3"	7.5	



NOTES:

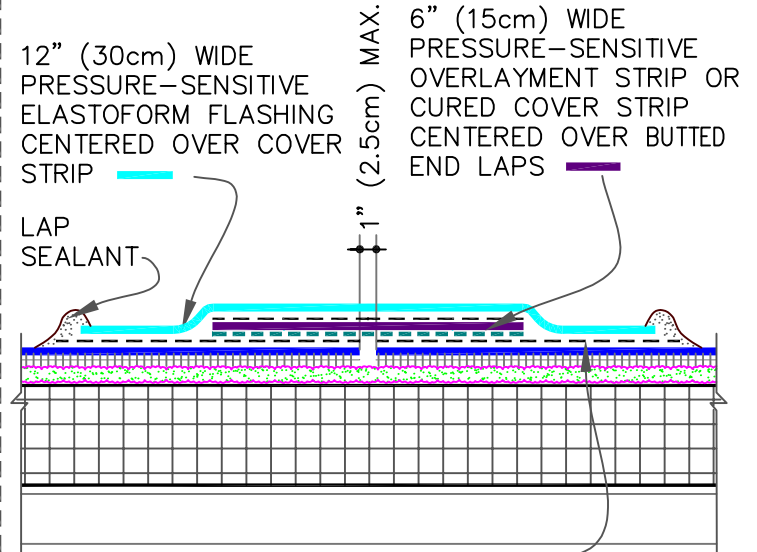
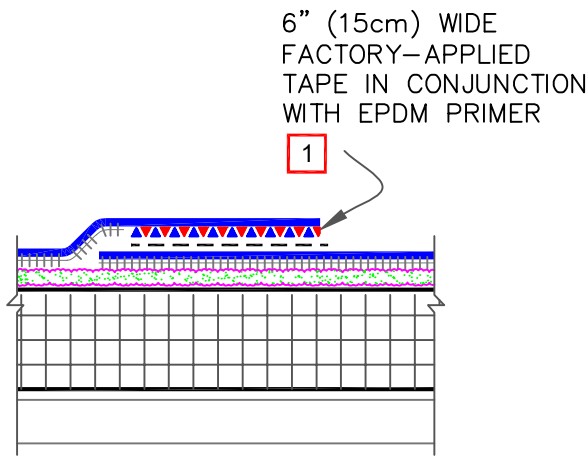
1. REMOVE ALL LEAD AND OTHER FLASHING BEFORE INSTALLING PRESSURE-SENSITIVE PIPE SEAL.
2. TEMPERATURE OF THE PIPE PENETRATION MUST NOT EXCEED 180°F (82°C).
3. PRE-MOLDED PIPE FLASHING MUST HAVE INTACT RIB AT THE TOP EDGE REGARDLESS OF PIPE DIAMETER.
4. DECK FLANGES OF THE PRESSURE-SENSITIVE PIPE SEAL SHALL NOT BE OVERLAPPED, CUT OR APPLIED OVER ANY ANGLE CHANGE.
5. WHEN A FIELD SPLICE INTERSECTS A PIPE SEAL, APPLY SURE-WHITE LAP SEALANT ALONG THE EDGE OF THE MEMBRANE SPLICE COVERING THE EXPOSED SPLICE TAPE 1/2" (1.5cm) IN EACH DIRECTION FROM THE SPLICE INTERSECTION & OVERLAY WITH A 7"X9" (17.5cm X 23cm) T-JOINT COVER.
6. ON MECHANICALLY-FASTENED ROOFING SYSTEMS, ADDITIONAL MEMBRANE SECUREMENT IS REQUIRED. REFER TO TPO [DETAIL U-8A](#).



—• TPO MEMBRANE —• APPROVED SUBSTRATE —• SEE NOTE(S)	PIPE: PRE-MOLDED PRESSURE-SENSITIVE SURE-WHITE EPDM PIPE SEAL For additional information, refer to Specifications		DETAIL NO. <b>U-8AT</b> THERMOPLASTIC TPO
--	--	--	---

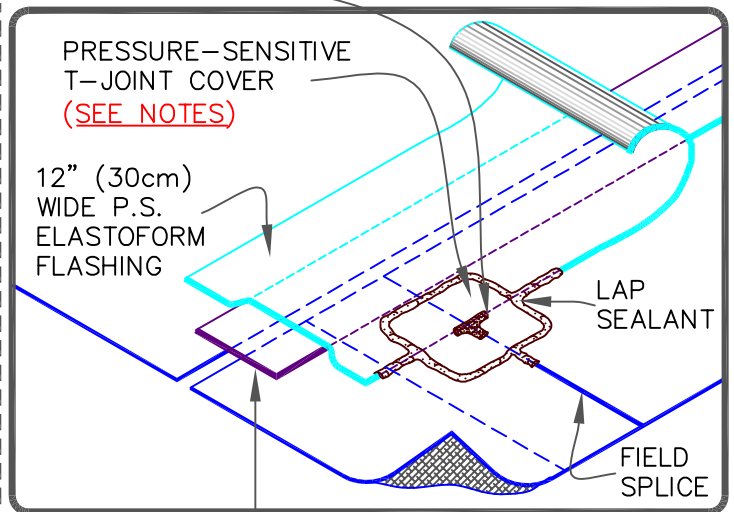
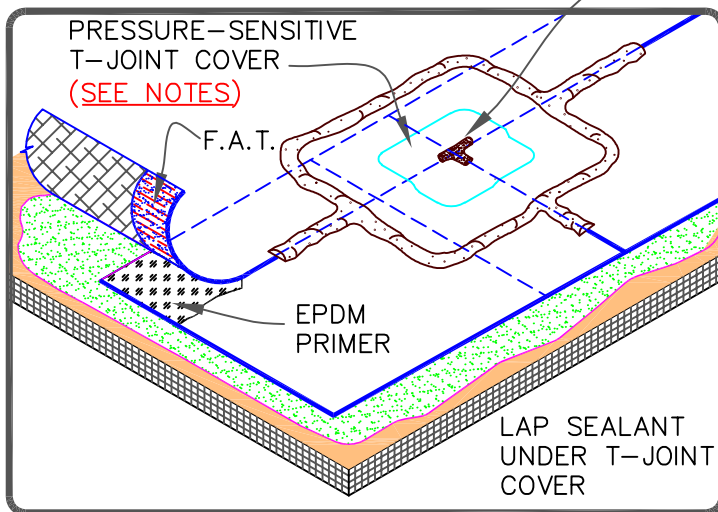
MEMBRANE SPLICE

END LAP SPLICE



LAP SEALANT UNDER T-JOINT COVER

EPDM  
-- PRIMER



NOTES:

1. APPLY EPDM PRIMER TO MEMBRANE SURFACES PRIOR TO INSTALLING PRESSURE-SENSITIVE FLASHING AND/OR FACTORY APPLIED SecurTAPE.
2. APPLY LAP SEALANT ALONG THE EDGE OF THE MEMBRANE SPLICE (UNDER THE 6"x6" (15cm X 15cm) T-JOINT COVER) COVERING THE EXPOSED SPLICE TAPE 1/2" (1.5cm) IN EACH DIRECTION FROM THE SPLICE INTERSECTION.
3. ALL EPDM SPLICE INTERSECTIONS MUST BE OVERLAID WITH TWO LAYERS OF PRESSURE-SENSITIVE ELASTOFORM FLASHING. THE BOTTOM LAYER SHALL BE 6"x6" (15cm X 15cm) COVERED WITH A 12"x12" (30cm X 30cm) TOP LAYER. BOTH LAYERS SHALL BE CENTERED OVER THE SPLICE INTERSECTION AND SEALED WITH CONTINUOUS LAP SEALANT, AS SHOWN.

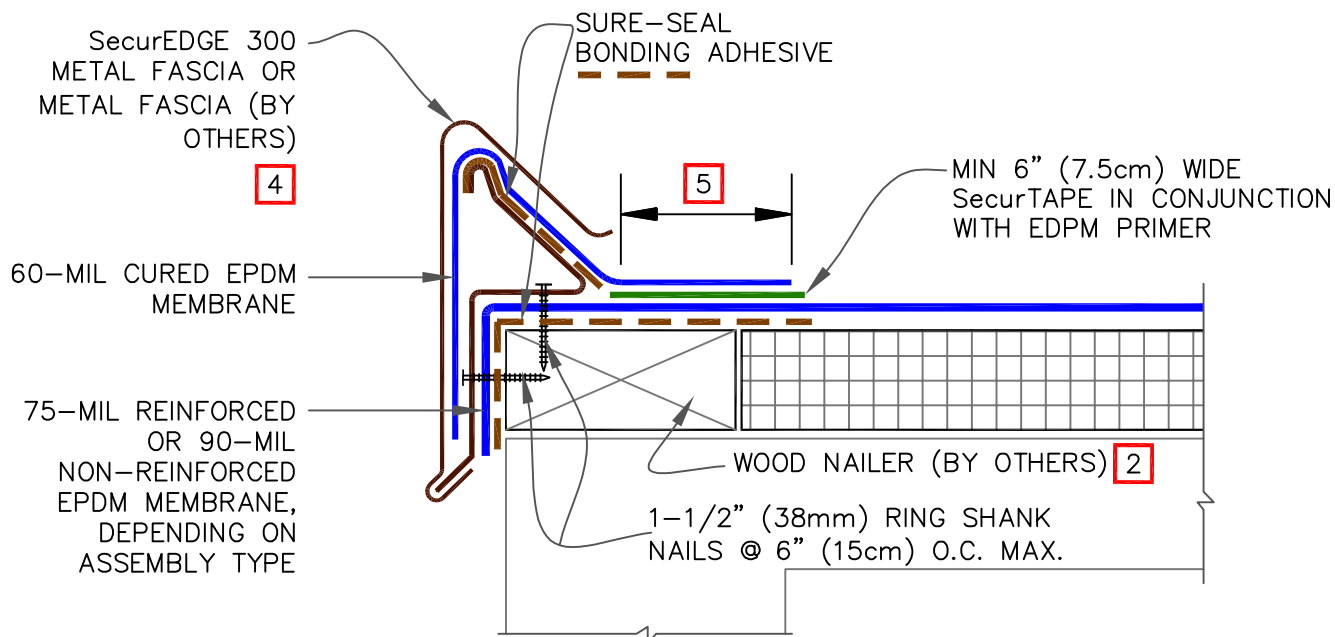
6" (15cm) WIDE PRESSURE-SENSITIVE OVERLAYMENT STRIP OR CURED COVER STRIP CENTERED OVER BUTTED END LAPS

	→ FleeceBACK MEMBRANE
	→ FLEX FAST
	→ APPROVED SUBSTRATE
	→ SEE NOTE(S)

EPDM MEMBRANE SPLICES-  
PROJECTS WITH 145-MIL MEMBRANE  
OR 25 and 30-YEAR WARRANTIES

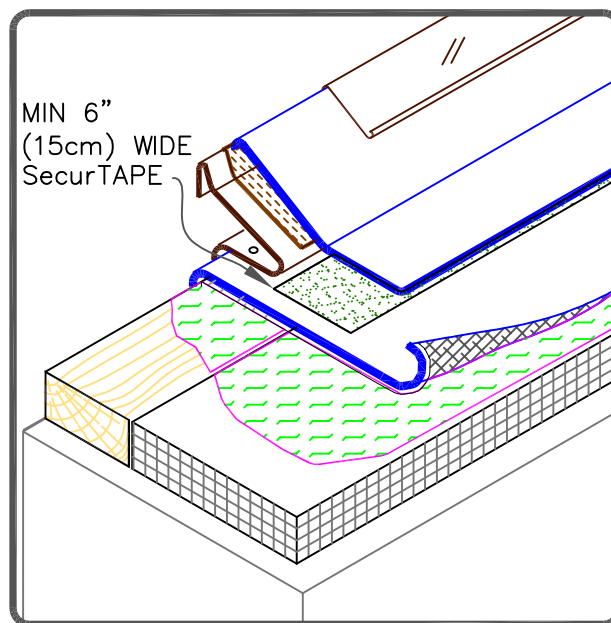
For additional information, refer to Specifications



	DETAIL NO.
	FB-2A.1
FLEECEBACK ADHERED	

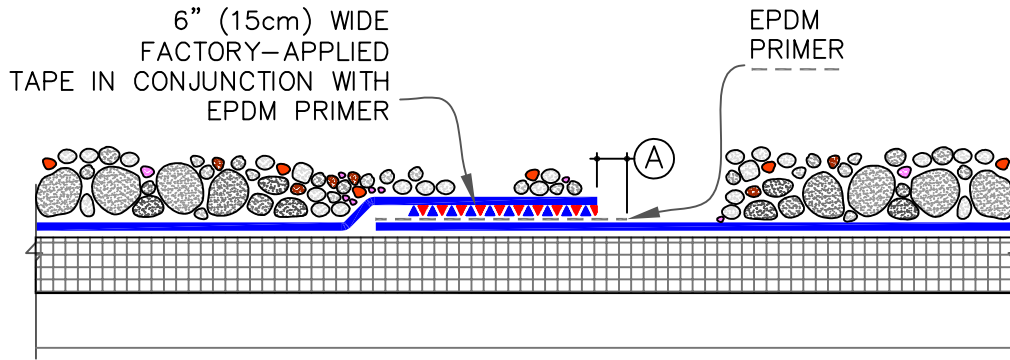


NOTES:

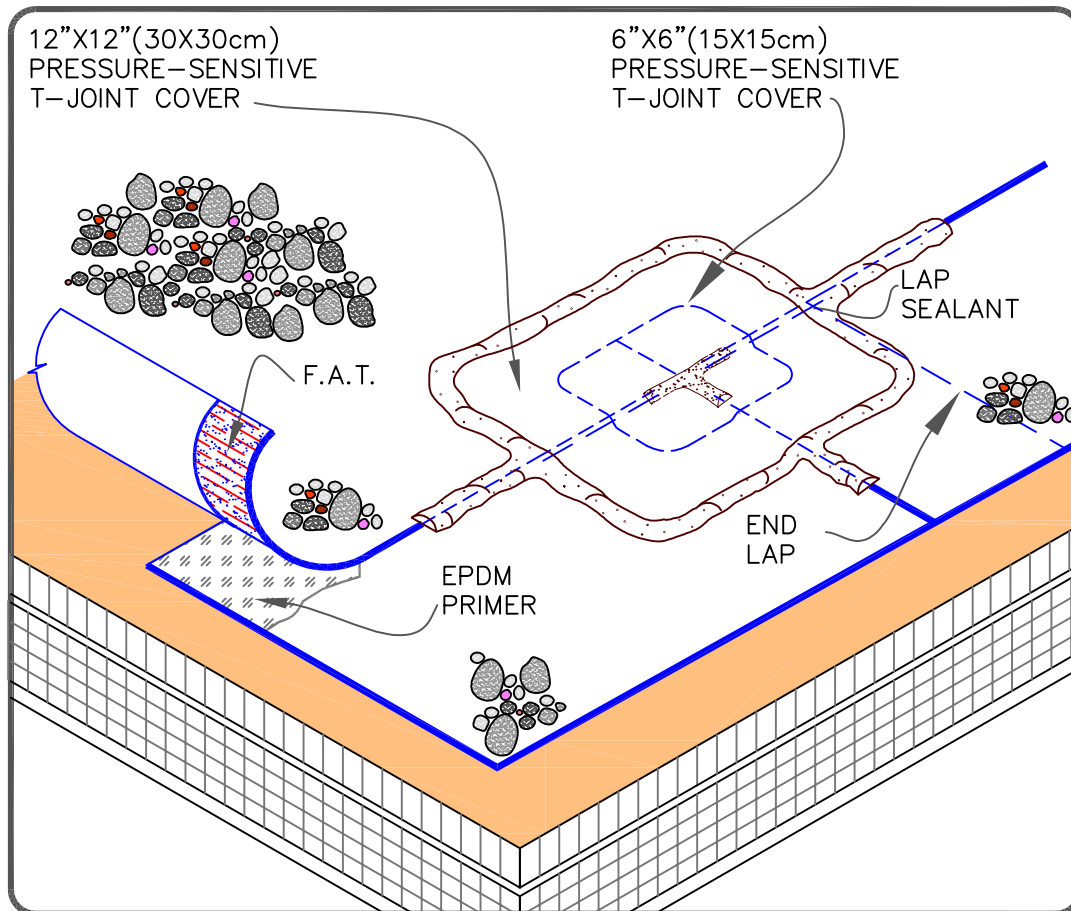
1. REFER TO [SecurEdge 300 INSTALLATION INSTRUCTION MANUAL](#) FOR STEP-BY-STEP INSTALLATION PROCEDURES.
2. WOOD NAILER MUST EXTEND PAST TOTAL WIDTH OF GRAVEL STOP DECK FLANGE.
3. PRESSURE-SENSITIVE T-JOINT COVER OR 6" (15cm) WIDE PRESSURE-SENSITIVE FLASHING, IN CONJUNCTION WITH EPDM PRIMER, MUST BE CENTERED OVER EPDM FIELD SPLICES AT THE ANGLE CHANGE. FIELD SPLICES SHALL BE OVERLAID WITH TWO LAYERS OF PRESSURE-SENSITIVE ELASTOFORM FLASHING. THE BOTTOM LAYER SHALL BE 6" (15cm) WIDE COVERED WITH A 12" WIDE TOP LAYER (30cm). BOTH LAYERS SHALL BE CENTERED AND SEALED WITH CONTINUOUS LAP SEALANT.
4. WHEN METAL FASCIA BY OTHERS IS USED, FASTENER TYPE AND FASTENING FREQUENCY SHALL BE RECOMMENDED BY METAL EDGE MANUFACTURER.
5. AN AIR/VAPOR BARRIER SHALL BE USED WHEN REQUIRED AND MUST BE SEALED AROUND PERIMETER AND ROOF PENETRATIONS. WHEN NOT SPECIFIED, THE ROOF MEMBRANE SHALL BE ADHERED OVER PERIMETER WOOD NAILER ALONG EDGES TO PREVENT AIR INFILTRATION ALONG EDGING, REGARDLESS OF ASSEMBLY TYPE (BALLASTED, ADHERED AND MECHANICALLY FASTENED).



 —• EPDM	CARLISLE SecurEdge 300 (25 / 30 YEAR WARRANTIES)		DETAIL NO.
 —• APPROVED SUBSTRATE			U-1F
 —• SEE NOTE(S)	For additional information, refer to Specifications	THERMOSET UNIVERSAL	



DIMENSION		cm
(A)	1/8" TO 1/2"	0.5 TO 1.5

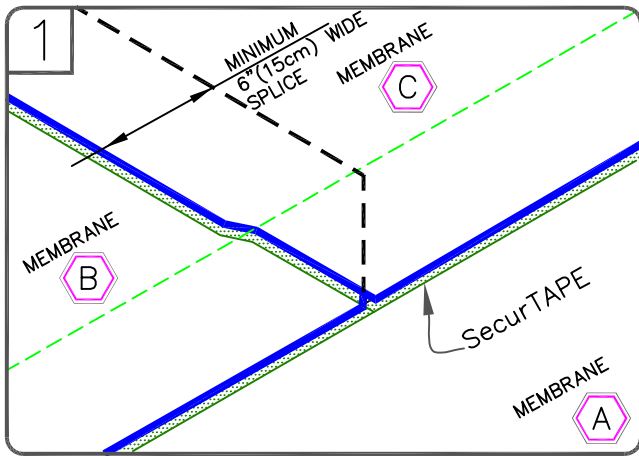


NOTES:

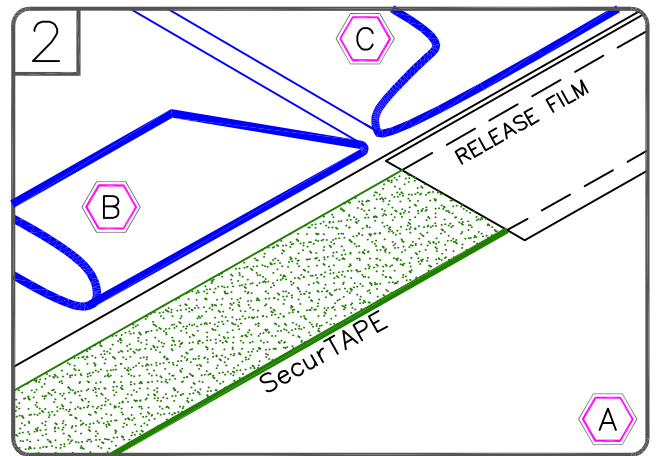
1. ALL SPLICE INTERSECTIONS MUST BE OVERLAID WITH TWO LAYERS OF PRESSURE-SENSITIVE ELASTOFORM FLASHING.
2. APPLY LAP SEALANT ALONG THE LEADING EDGE OF THE MEMBRANE SPLICE COVERING 1/2" (1.5cm) IN ALL DIRECTIONS FROM THE SPLICE INTERSECTION AND OVERLAY WITH A 6"X6" (15X15cm) T-JOINT COVER. A SECOND LAYER OF 12"X12" (30X30cm) PRESSURE-SENSITIVE T-JOINT COVER IS REQUIRED.
3. BOTH LAYERS SHALL BE CENTERED OVER THE SPLICE INTERSECTION AND SEALED WITH CONTINUOUS LAP SEALANT.

 —• EPDM  —• APPROVED SUBSTRATE  —• SEE NOTE(S)	<p>MEMBRANE SPLICE (25 / 30 YEAR WARRANTIES)</p> <p>For additional information, refer to Specifications</p>		<p>DETAIL NO. B-2</p> <p>BALLASTED EPDM</p>
--	---	---	---

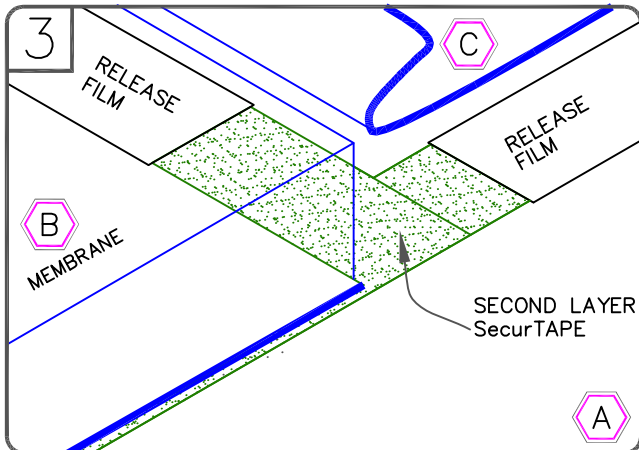




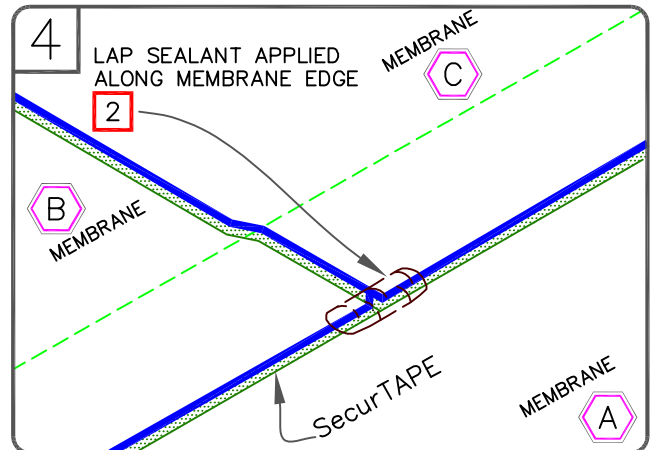
1 POSITION MEMBRANE TO ALLOW AN APPROXIMATE 7" (17.5cm) OVERLAP. MARK THE BOTTOM SHEET WITH AN INDELIBLE MARKER 1/2" (1.5cm) FROM THE EDGE OF THE TOP SHEET AS SHOWN. THE PRE-MARKED LINE ON THE MEMBRANE EDGE CAN ALSO BE USED AS A GUIDE.



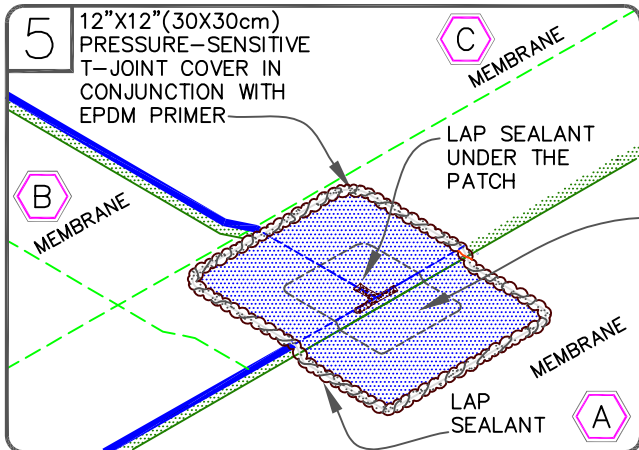
2 FOLD SHEETS BACK AS SHOWN. APPLY EPDM PRIMER TO THE SPLICE AREA ON BOTH SURFACES AND ALLOW TO PROPERLY DRY. APPLY SecurTAPE WITH RELEASE FILM ALIGNED WITH MARKER LINE.



3 SPLICE SHEET B TO SHEET A AND APPLY SECOND PIECE OF SecurTAPE BETWEEN SHEET B AND C. TRIM RELEASE FILM AS SHOWN.



4 SPLICE SHEET C TO SHEET A AND B, PRESS TOP SHEET ONTO BOTTOM SHEET USING HAND PRESSURE TOWARDS THE OUTER EDGE OF THE SPLICE AND ROLL THE SPLICE AREA WITH A 2" (5cm) WIDE STEEL ROLLER.



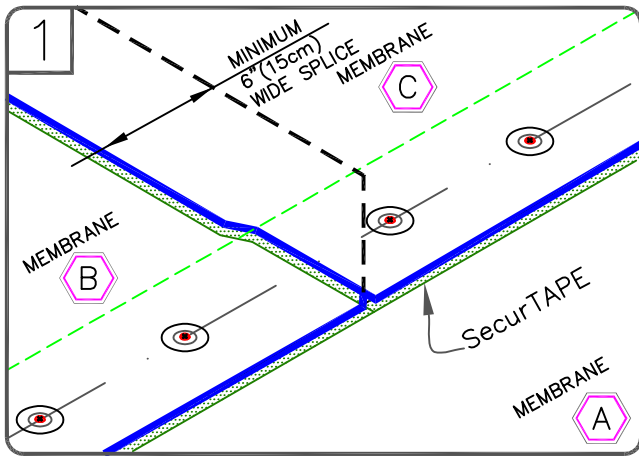
5 APPLY 6"x6" (15X15cm)PRESSURE-SENSITIVE T-JOINT COVER AND 12"x12" (30X30cm)PRESSURE-SENSITIVE T-JOINT COVER CENTERED OVER THE INTERSECTING POINT OF THE LEADING EDGES OF THE FIELD SPLICE INTERSECTION AS SHOWN.

6"x6" (15X15cm) PRESSURE-SENSITIVE T-JOINT COVER IN CONJUNCTION WITH EPDM PRIMER

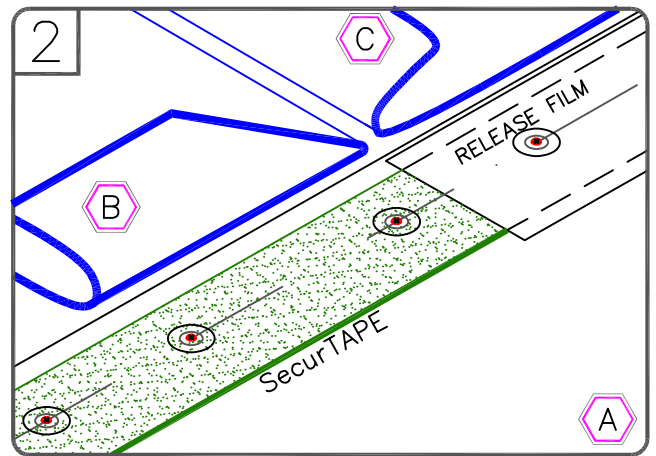
NOTES:

1. APPLY LAP SEALANT AT CUT EDGES OF REINFORCED MEMBRANE AND TAPE OVER LAPS.
2. APPLY LAP SEALANT ALONG THE EDGES OF THE MEMBRANE SPLICE COVERING THE EXPOSED SPLICE TAPE 1/2" (15cm) IN EACH DIRECTION FROM THE SPLICE INTERSECTION.

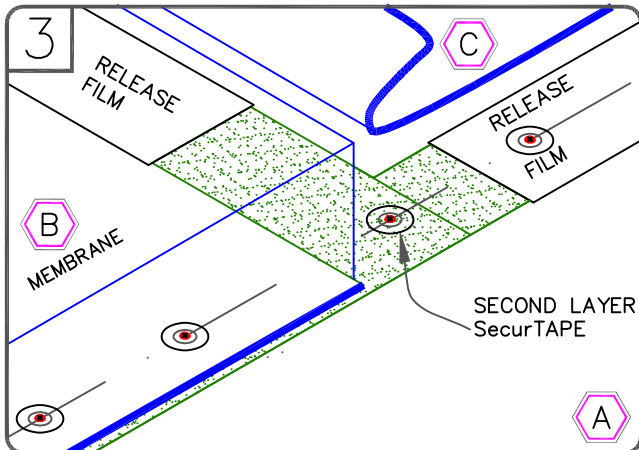
<p>—• EPDM</p> <p>—• APPROVED SUBSTRATE</p> <p>—• SEE NOTE(S)</p>	<p>SecurTAPE SPLICE INTERSECTION (25 / 30 YEAR WARRANTIES OR 90mil MEMBRANE)</p> <p>For additional information, refer to Specifications</p>	<p>DETAIL NO. U-2D</p> <p>THERMOSET UNIVERSAL</p>
---	---	---



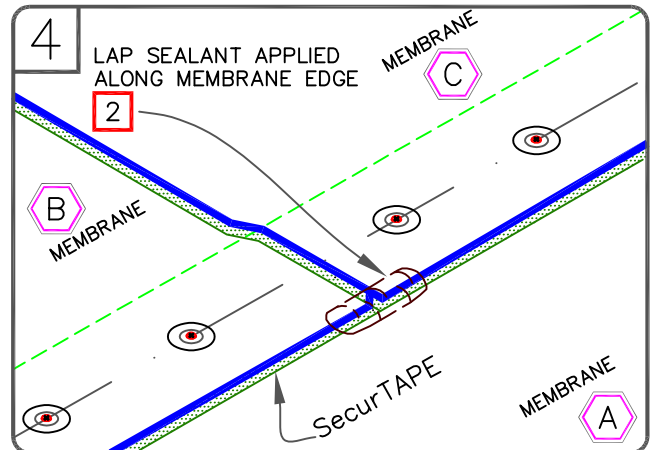
POSITION MEMBRANE TO ALLOW AN APPROXIMATE 7" (17.5cm) OVERLAP. MARK THE BOTTOM SHEET WITH AN INDELIBLE MARKER 1/2" (1.5cm) FROM THE EDGE OF THE TOP SHEET AS SHOWN. THE PRE-MARKED LINE ON THE MEMBRANE EDGE CAN ALSO BE USED AS A GUIDE.



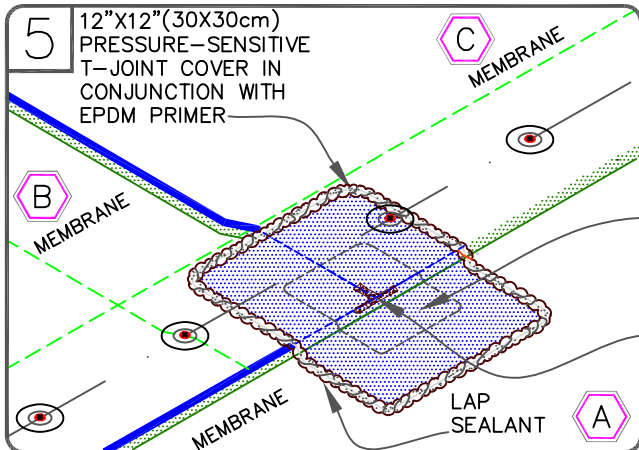
FOLD SHEETS BACK AS SHOWN. APPLY EPDM PRIMER TO THE SPLICE AREA ON BOTH SURFACES AND ALLOW TO PROPERLY DRY. APPLY SecurTAPE WITH RELEASE FILM ALIGNED WITH MARKER LINE.



SPLICE SHEET B TO SHEET A AND APPLY SECOND PIECE OF SecurTAPE BETWEEN SHEET B AND C. TRIM RELEASE FILM AS SHOWN.



SPLICE SHEET C TO SHEET A AND B, PRESS TOP SHEET ONTO BOTTOM SHEET USING HAND PRESSURE TOWARDS THE OUTER EDGE OF THE SPLICE AND ROLL THE SPLICE AREA WITH A 2" (5cm) WIDE STEEL ROLLER.



APPLY 6"x6"(15X15cm) PRESSURE-SENSITIVE T-JOINT COVER AND 12"x12"(30X30cm) PRESSURE-SENSITIVE T-JOINT COVER CENTERED OVER THE INTERSECTING POINT OF THE LEADING EDGES OF THE FIELD SPLICE INTERSECTION AS SHOWN.

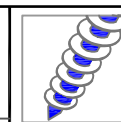
NOTES:

1. APPLY LAP SEALANT AT CUT EDGES OF REINFORCED MEMBRANE AND TAPE OVER LAPS.
2. APPLY LAP SEALANT ALONG THE EDGES OF THE MEMBRANE SPLICE COVERING THE EXPOSED SPLICE TAPE 1/2" (1.5cm) IN EACH DIRECTION FROM THE SPLICE INTERSECTION.

	REINFORCED EPDM- UNLESS NOTED OTHERWISE
	APPROVED SUBSTRATE
	SEE NOTE(S)

SecurTAPE SPLICE INTERSECTION  
(25 / 30 YEAR WARRANTIES)

For additional information, refer to Specifications



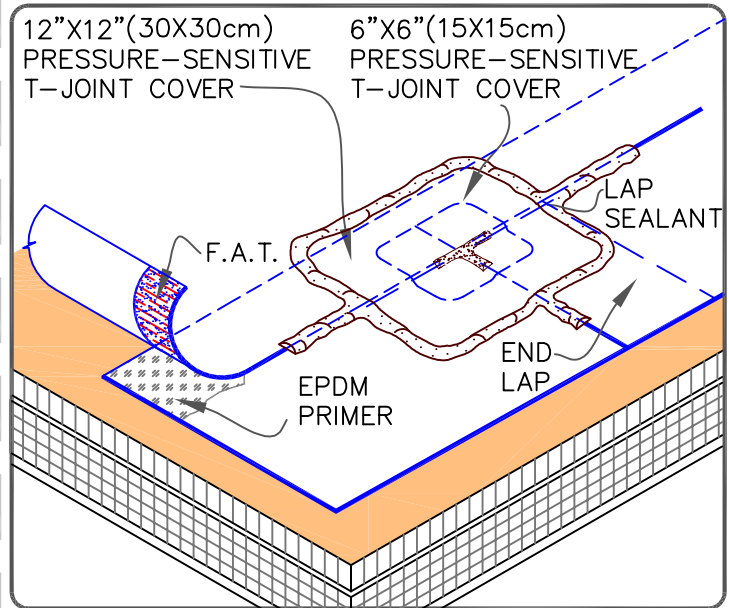
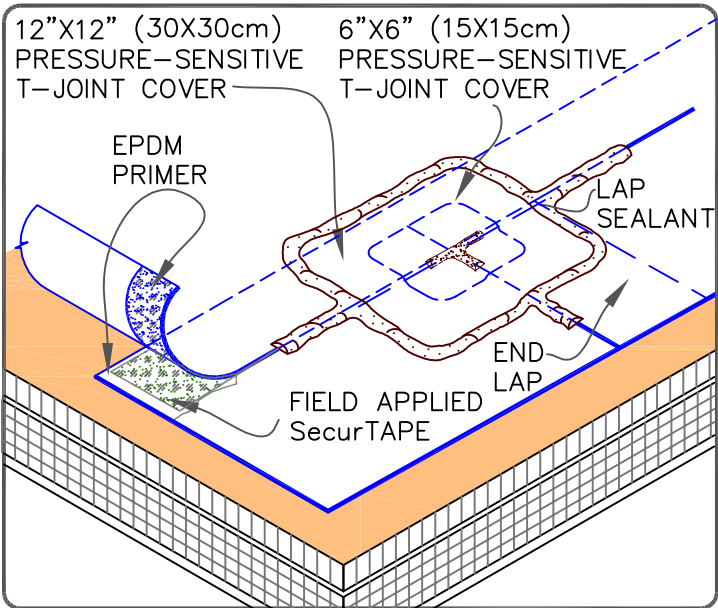
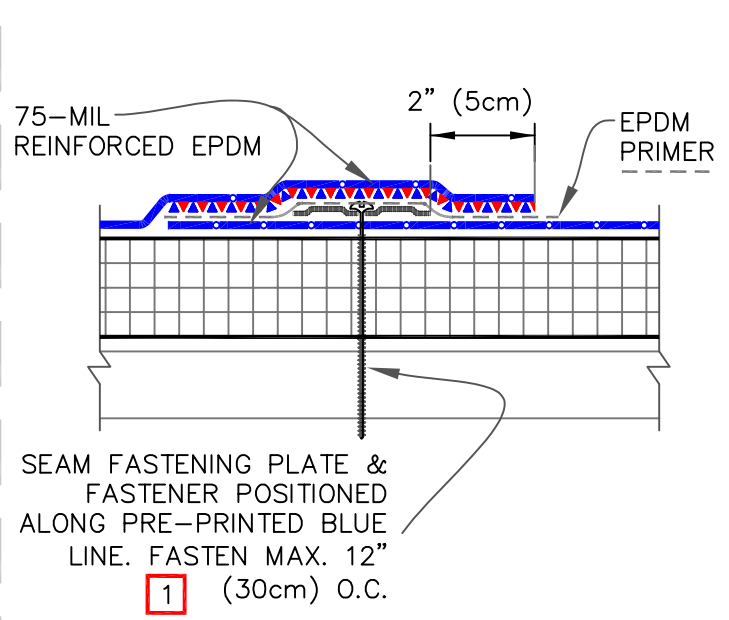
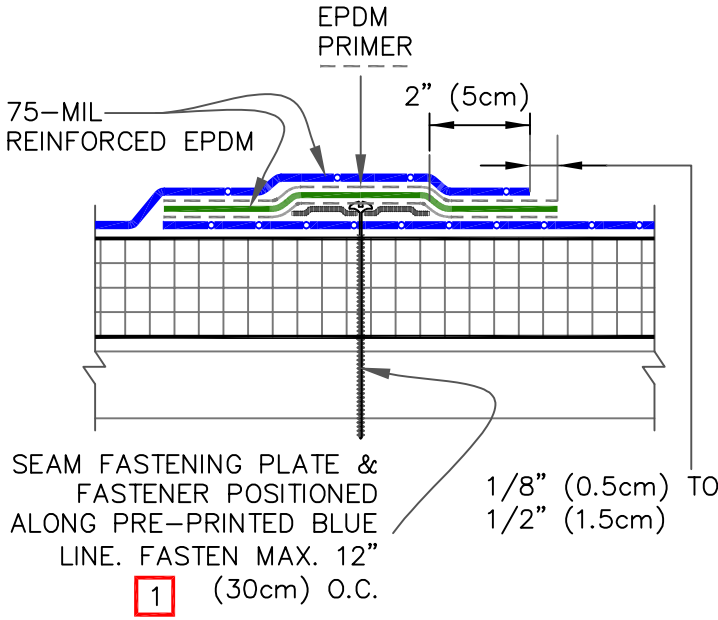
DETAIL NO.

MF-2E

MECHANICALLY FASTENED

FIELD APPLIED SecurTAPE

FACTORY APPLIED SecurTAPE



FIELD APPLIED SecurTAPE

F.A.T. (FACTORY APPLIED SecurTAPE)

NOTES:

1. FIELD APPLIED SecurTAPE IS TO BE OVERLAPPED A MINIMUM OF 1" (2.5cm) AT THE ENDS OF EACH CUT PIECE. APPLY LAP SEALANT AT TAPE OVERLAPS 1/2" (1.5cm) IN ALL DIRECTIONS AS SHOWN.
2. ALL SPLICE INTERSECTIONS MUST BE OVERLAID WITH TWO LAYERS OF PRESSURE-SENSITIVE ELASTOROM FLASHING. BOTH LAYERS SHALL BE CENTERED OVER THE SPLICE INTERSECTION AND SEALED WITH CONTINUOUS LAP SEALANT.
3. END LAPS SHALL BE SPLICED USING 6" (15cm) WIDE SecurTAPE. REFER TO DETAIL [MF-2B](#)
4. LAP SEALANT IS REQUIRED ON CUT EDGES OF REINFORCED EPDM MEMBRANE.

	<ul style="list-style-type: none"> <li>● REINFORCED EPDM—UNLESS NOTED OTHERWISE</li> <li>● APPROVED SUBSTRATE</li> <li>● SEE NOTE(S)</li> </ul>	<p>MEMBRANE SPLICE (25 / 30 YEAR WARRANTIES)</p> <p>For additional information, refer to Specifications</p>	<p>DETAIL NO. <b>MF-2D</b></p> <p>MECHANICALLY FASTENED</p>
--	---	---	---